

Showcase Sydney: Shaping a Low Carbon Future



Norma Shankie-Williams
Technical Director for NSW and ACT, AECOM
Metro Strategy

Peter Poulet
NSW Government Architect, General Manager
The Green Grid

David Pitchford
CEO, Urban Growth NSW
Transforming Metropolitan Sydney



SYDNEY

Shaping a Low Carbon Future Metropolitan Scale Framework

CRC for low carbon living Nov 14th 2014

Norma Shankie-Williams

Technical Director, Planning + Design

AECOM

Big, long term thinking required

- **Current planning to 2031 – too short**
- **Need to shape the city now to perform well at mid-century and beyond - 8m**
- **Factor carbon reduction into all planning and decision making**
- **Need to transform Sydney from:**
 - low-density, inefficient land use
 - Inefficient buildings
 - Weak connectivity and car dependency
 - Hostile for walkers and cyclists



Big, long term thinking required



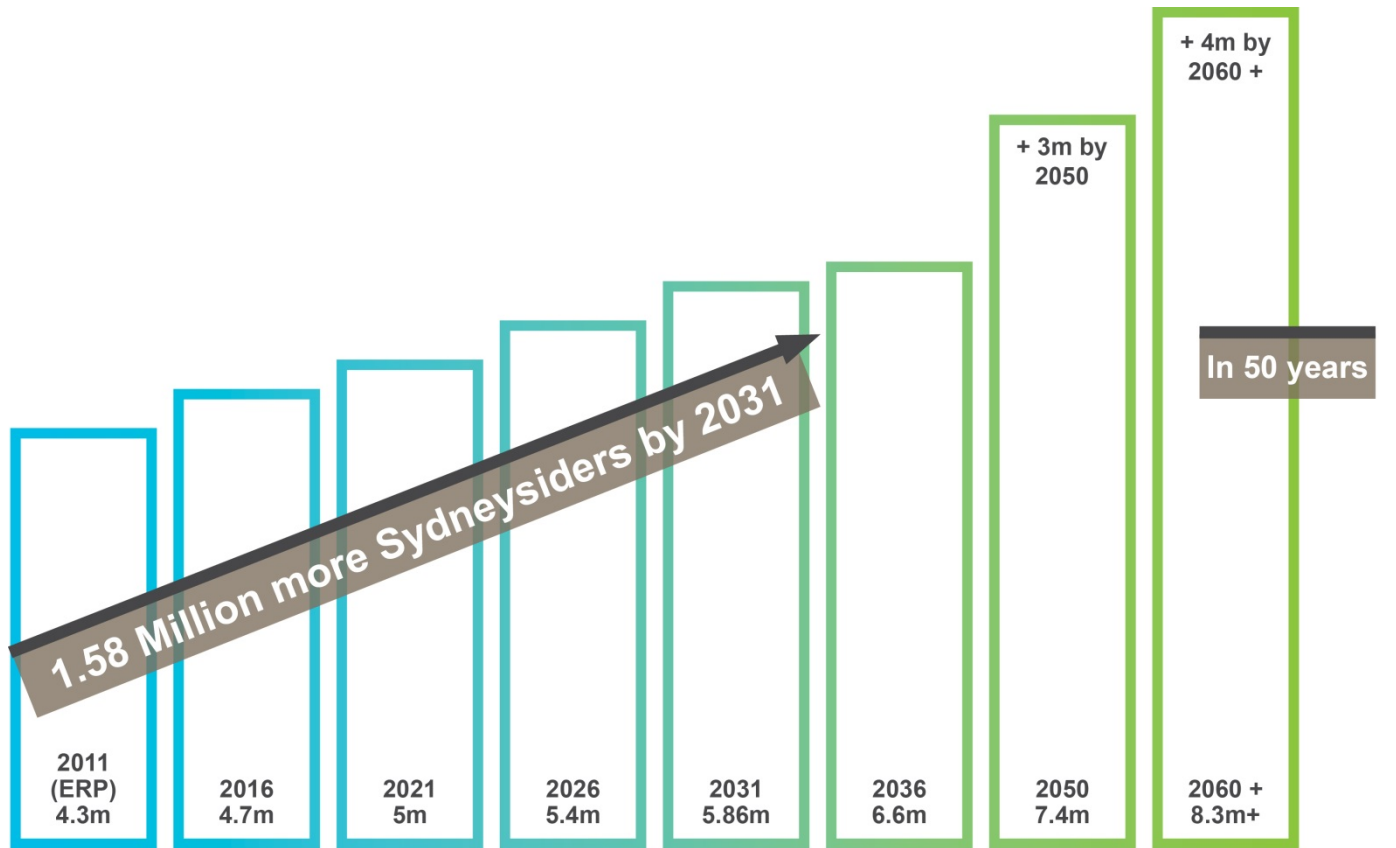
Need a vision and strategy for the city that:

- Delivers a thriving economy in a de-carbonising world
- Gives everyone the chance to lead healthy, productive lives
- Gives everyone access to the things they need
- Values and supports community diversity
- Inspires and excites us
- Engenders pride



Metropolitan Sydney

Population growth



Almost double the current population

State Government's integrated approach to long term strategic planning for Sydney



A resilient future city



Well connected, access to jobs, lively densities

- Employment and housing planned to work together - minimising driving - affordable
- Reliable and appealing public transport
- Attractive, safe walking and cycling routes embedded in regional and city planning
- Density improvements (only 2000p/km² - 40% of London and 20% of NY or Singapore)
- Better buildings and places through urban renewal
- Systematic improvement of city fabric (thermal performance – water - design)



A resilient future city



- **A city that is designed to reduce carbon by improving the efficiency of movement and giving citizens good access to services and facilities**
- **A polycentric city with strong, connected strategic centres**
- **A city that has planned for movement of goods and freight**
- **Support for food production close to the city limits and throughout the urban area**

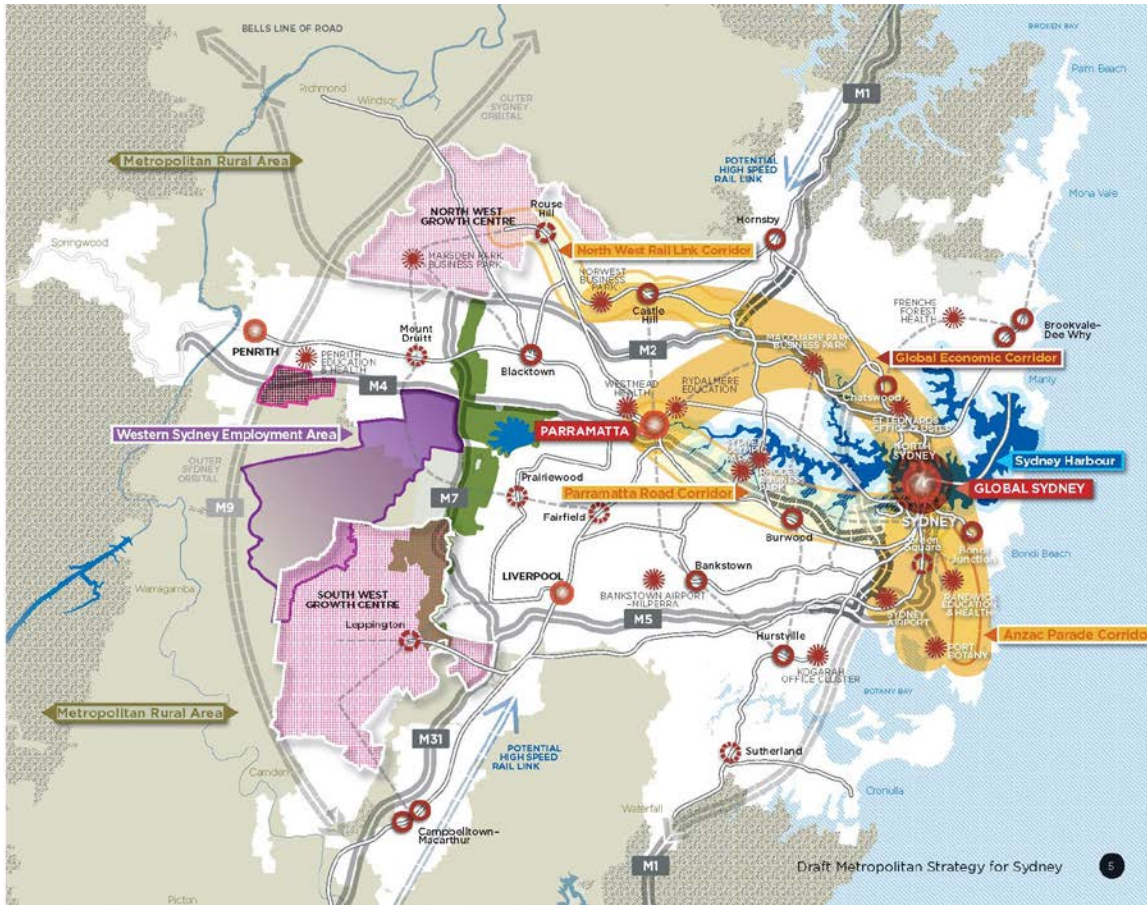
Shaping the future city



- **Global Sydney and major renewal projects**
- **Cleaning up and revitalising old precincts for new living and working precincts**
- **Parramatta light rail and city reinvention**
- **NW and SW Rail Links connecting the Growth Centres**
- **Freight corridors and WSEA**
- **New airport and metropolitan – wide connections**
- **Metropolitan Rural Area**



Current Draft Metropolitan Strategy for Sydney to 2031



Major city transformation



- **Urban Activation Precincts in the East such as:**
 - N. Ryde, Wentworth Point, Carter St, Randwick, Epping Town Centre, Herring Rd.
- **Major UrbanGrowth projects such as:**
 - Green Square, Central to Eveleigh, N. Parramatta, Bays Precinct.
- **Stronger focus on Western Sydney**
 - Airport, jobs, diverse, energy efficient housing, public transport.



Challenges for metro planning



- **Decisions about transport and infrastructure investment factor in reducing carbon**
- **New opportunities for the growing population in a de-carbonising world - new industries and activities**
- **Design and place making that delivers a world class, low carbon city, enhancing Sydney's Global standing**
- **Green connections for a liveable city and fresh local food that encourages healthy lifestyles and boosts the Sydney brand.**



Bright future for Sydney

If we get it right



Bright future IF:

- good long term strategy in place that specifically factors in reducing carbon through smart city planning and all development decisions.

Sydney affirmed as Australia's Global city.



THE GREEN GRID

CREATING SYDNEY'S OPEN SPACE NETWORK

THE NSW
GOVERNMENT
ARCHITECT'S OFFICE



Public Works

Investing in the future of NSW





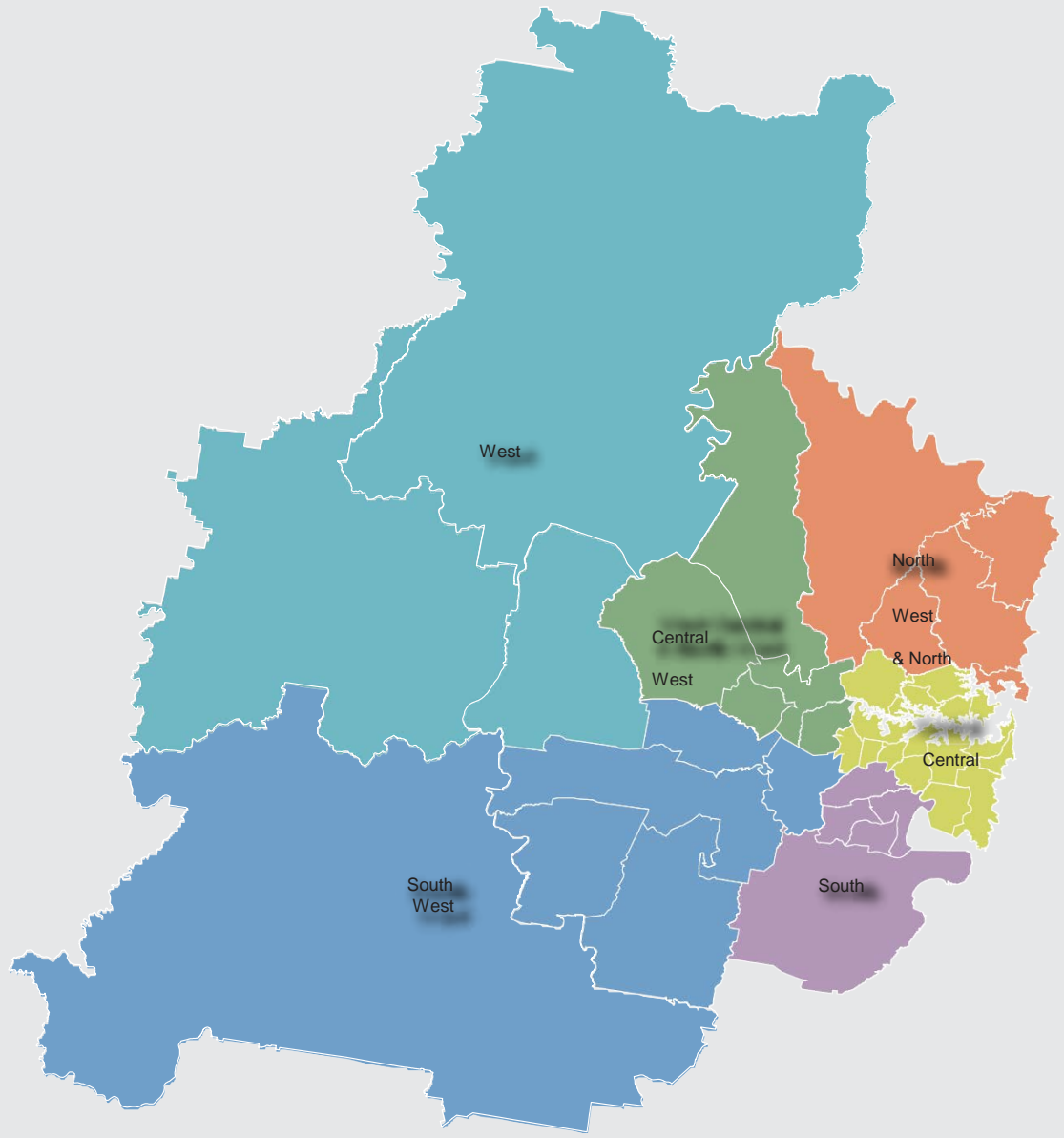
Draft Metropolitan Strategy for Sydney to 2031

March 2013



A strong global city, a liveable local city





As Sydney grows, the metropolitan strategy sets out a vision for Sydney to remain distinctive and inspiring and one of the most liveable cities in the world

a liveable city

metro strategy objectives

8

create socially inclusive places that promote, social cultural and recreational opportunities

9

deliver accessible and adaptable recreation and open space

19

build resilience to natural hazards

21

improve air quality

22

achieve a healthy water environment

23

protect, enhance and rehabilitate biodiversity

the east London green grid

East London Green Grid

Primer

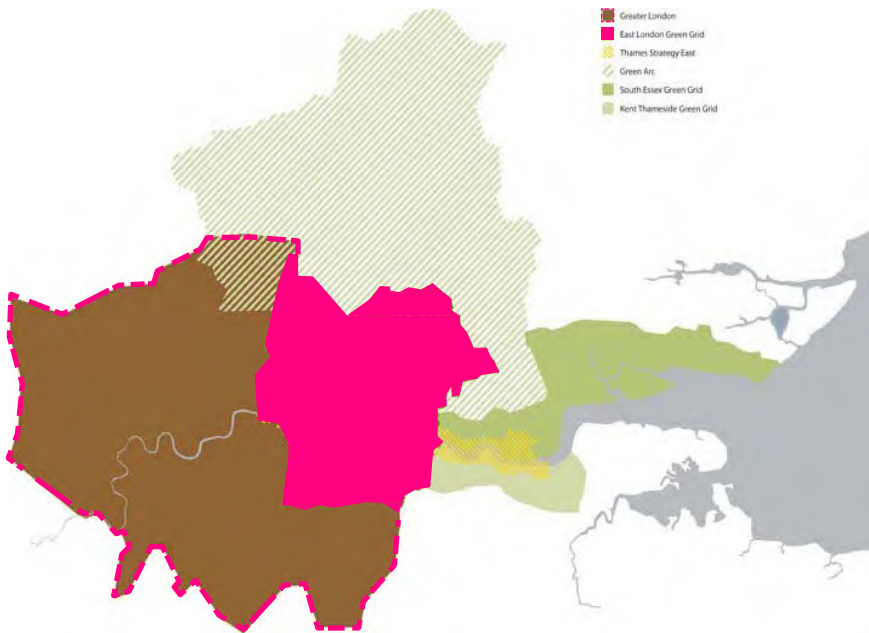


“The Vision for the East London Green Grid is to create a network of interlinked, multi-purpose open spaces with good connections to the areas where people live and work, public transport, the Green Belt and the Thames. This will be a richly varied landscape that will include diverse uses to appeal to all.”

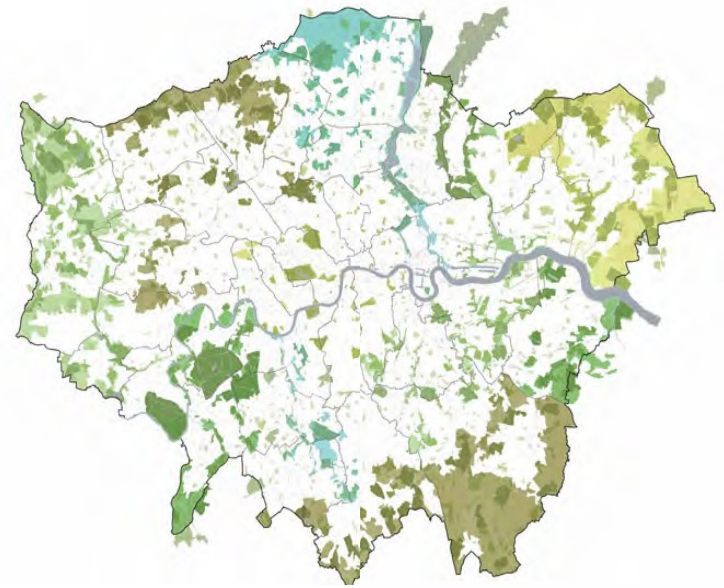
East London Green Grid Primer

the all London green grid

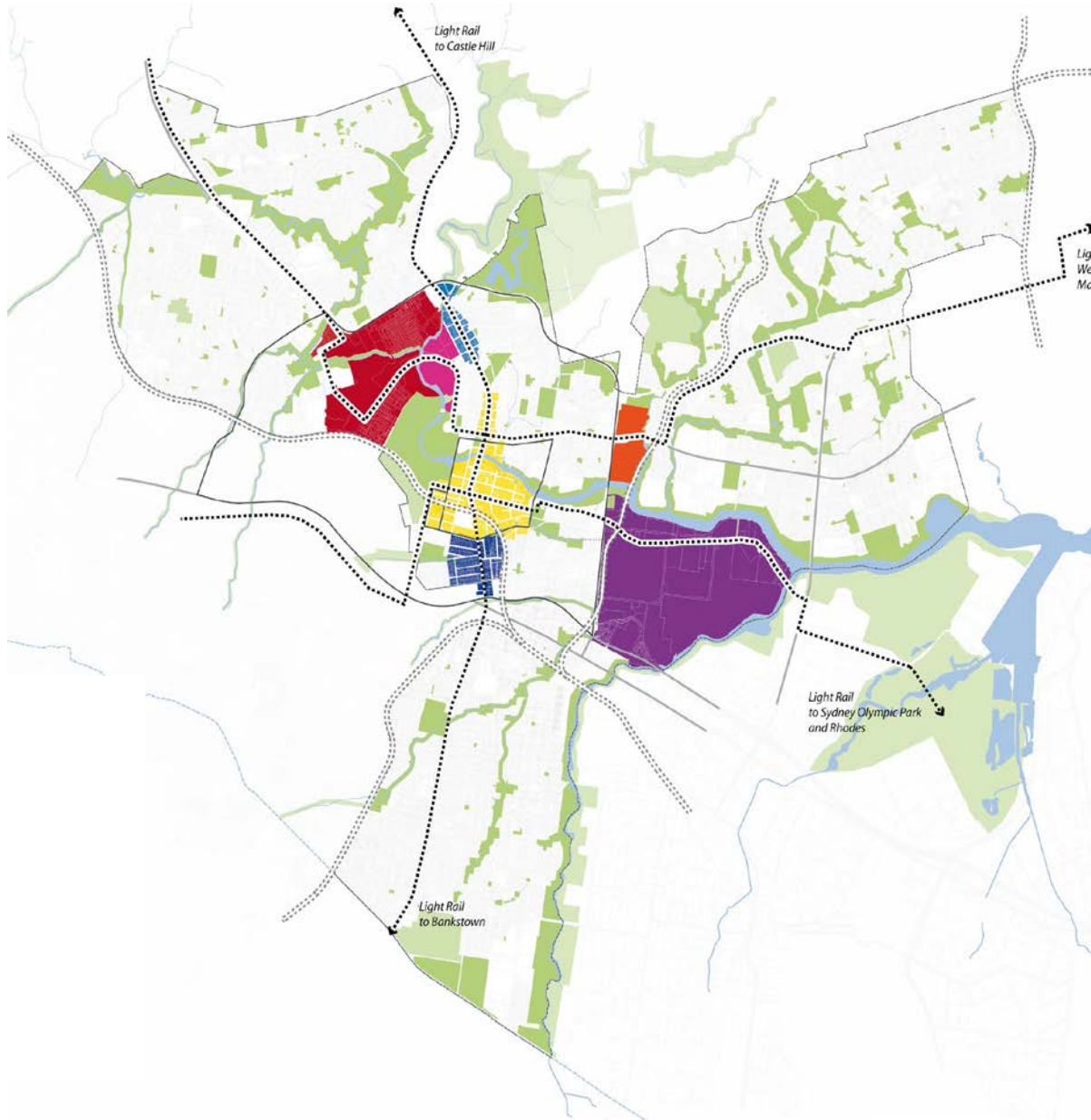
The East London Green Grid and adjacent green infrastructure initiatives

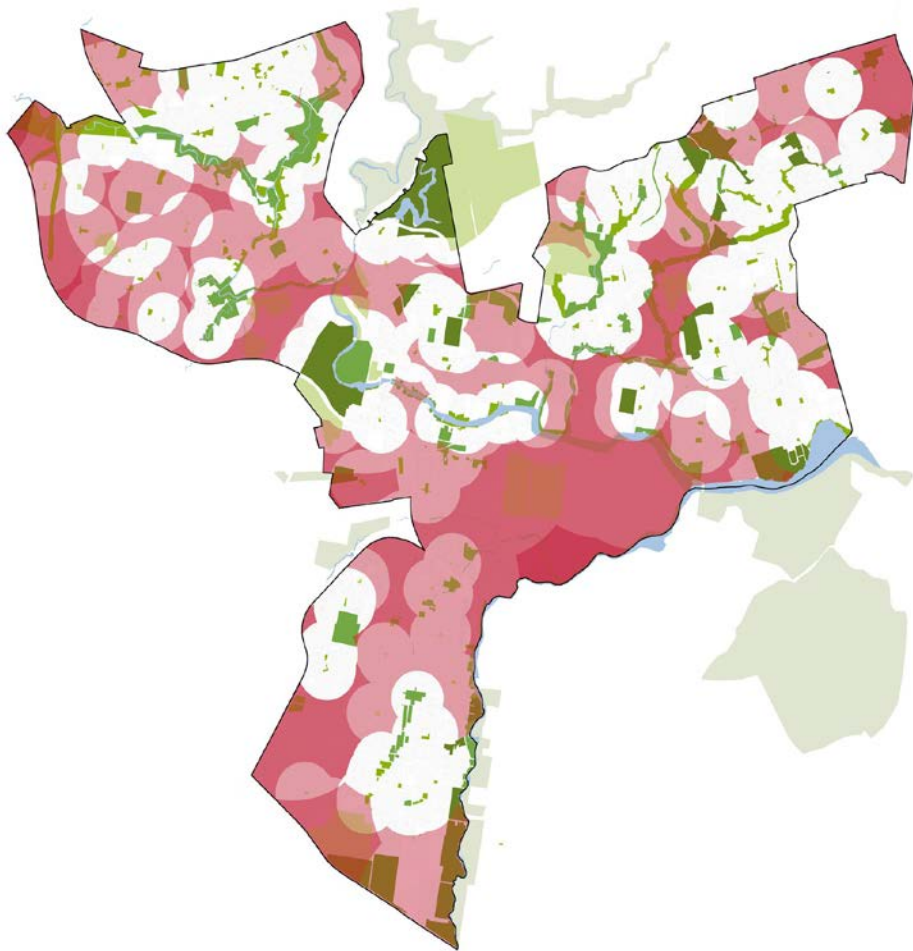


The East London Green Grid is the agreed delivery mechanism for central government's Greening The Gateway Programme in London, emerging ideas for a Thames Estuary Parklands develop this relationship further.

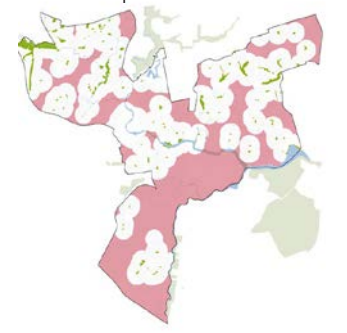


the Parramatta green grid

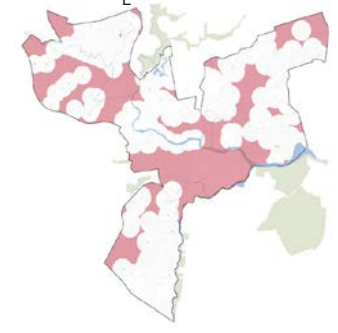




DISTRIC
T

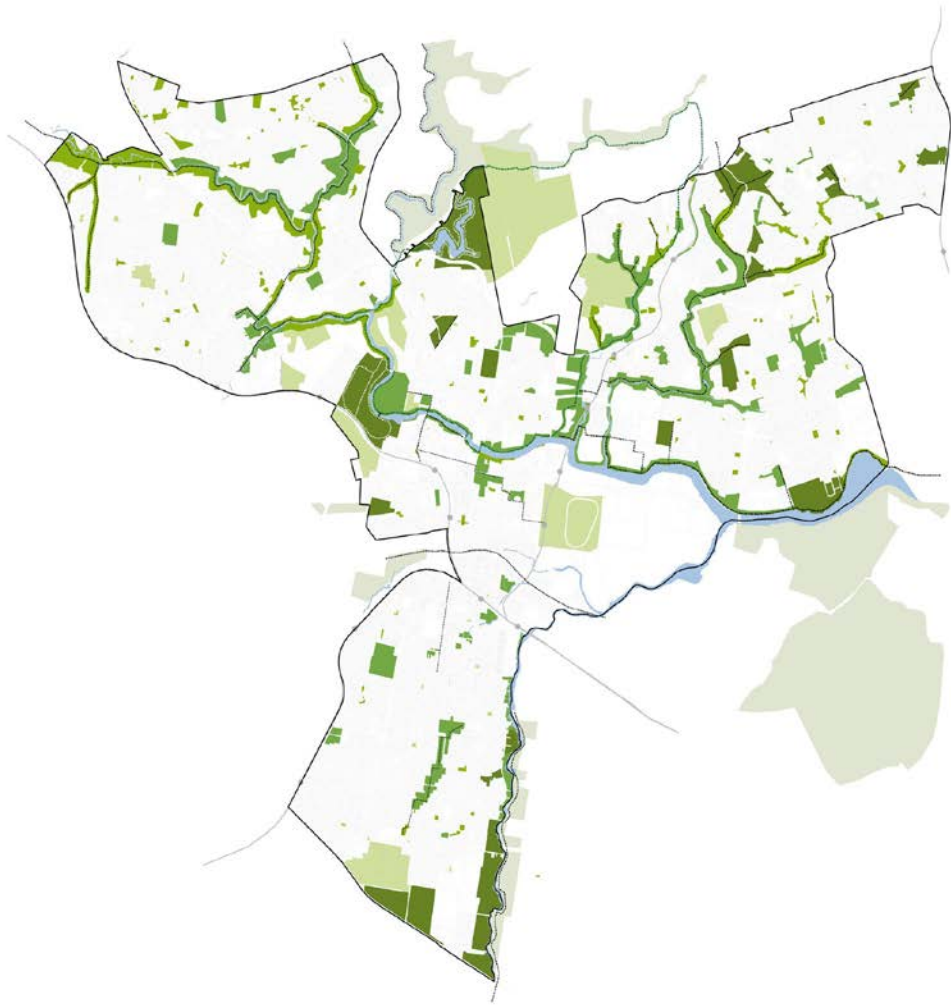


LOCA
L



POCKET
PARK

composite open space deficiency

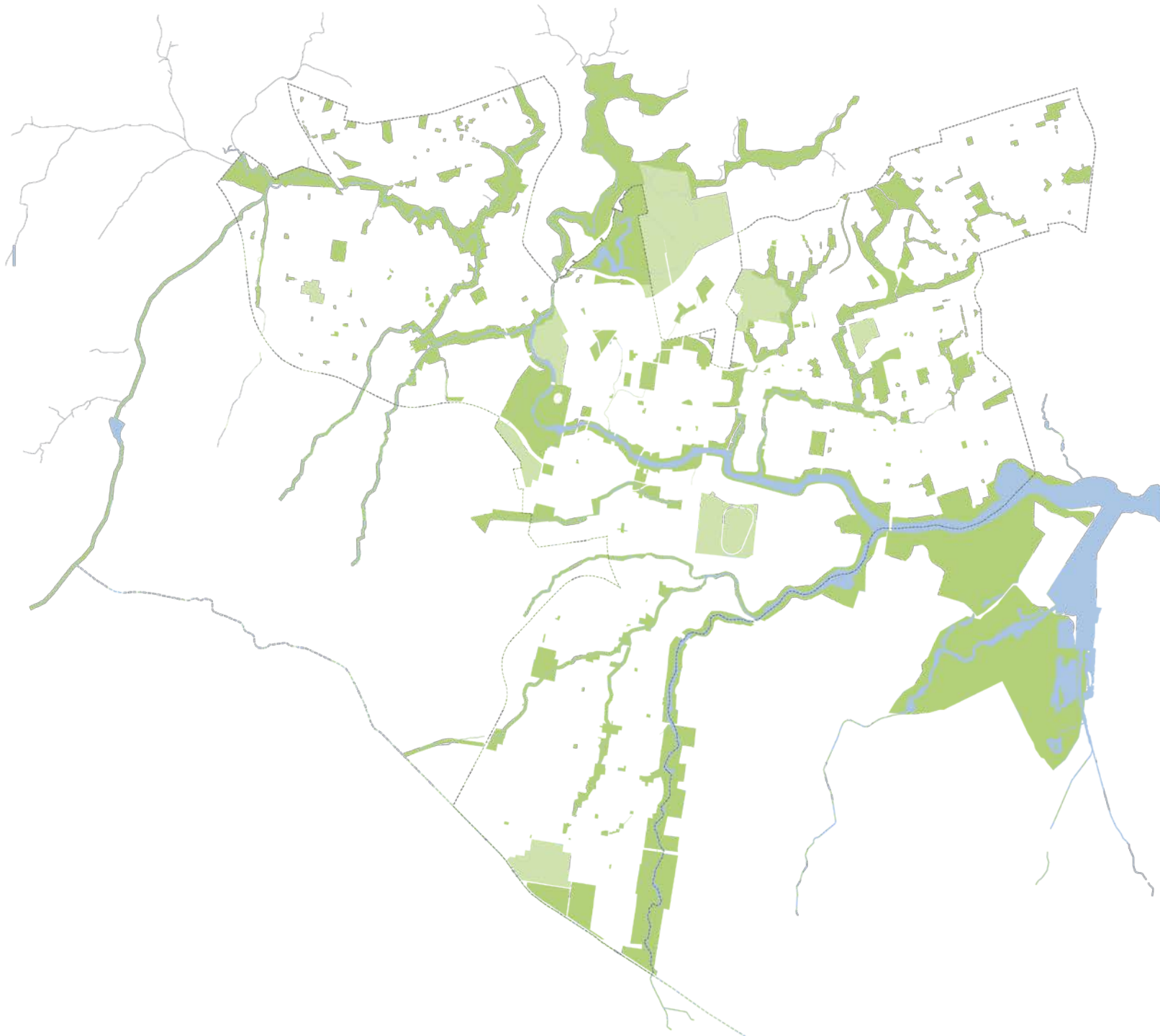


existing open space network

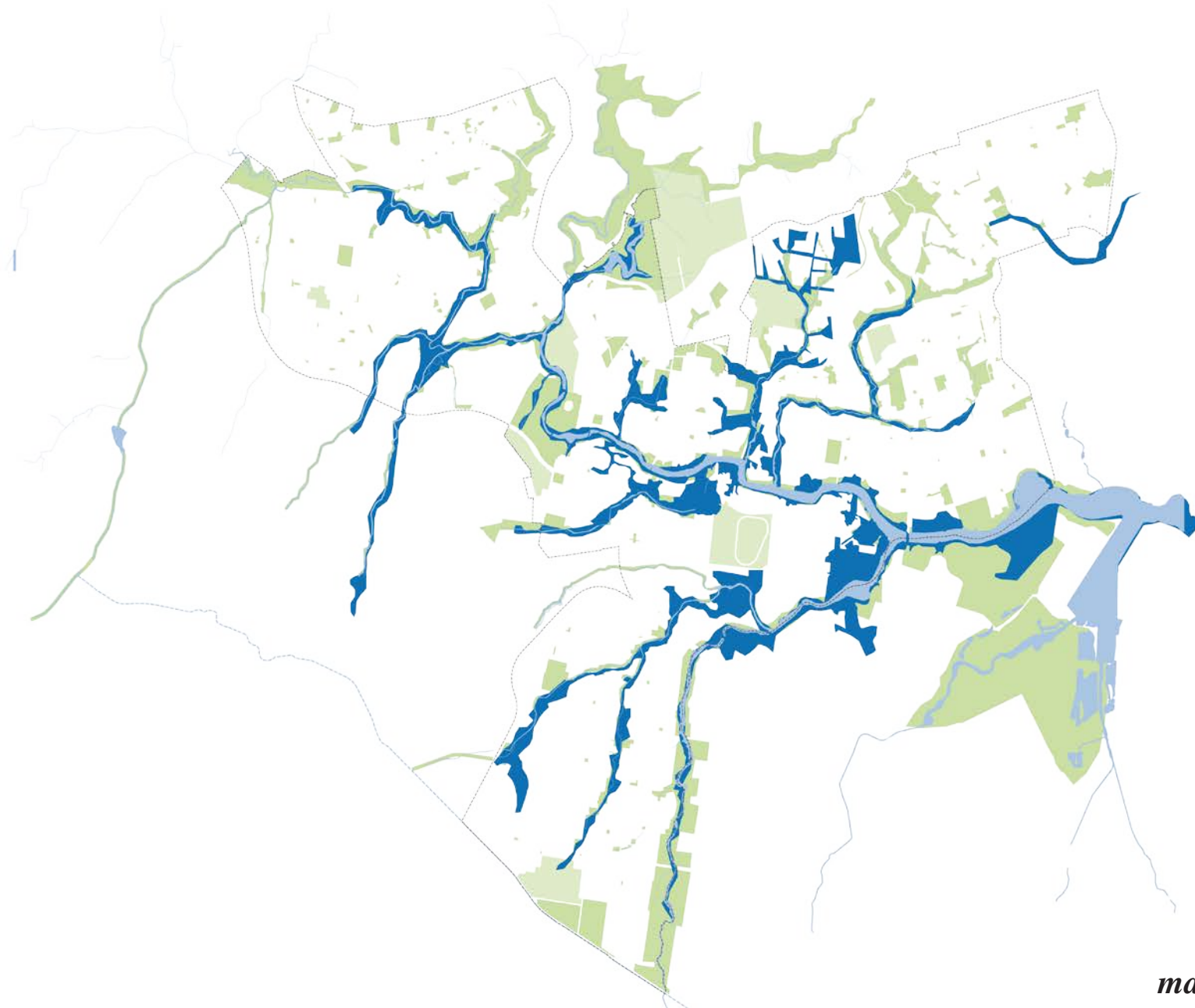


promoting access to open space

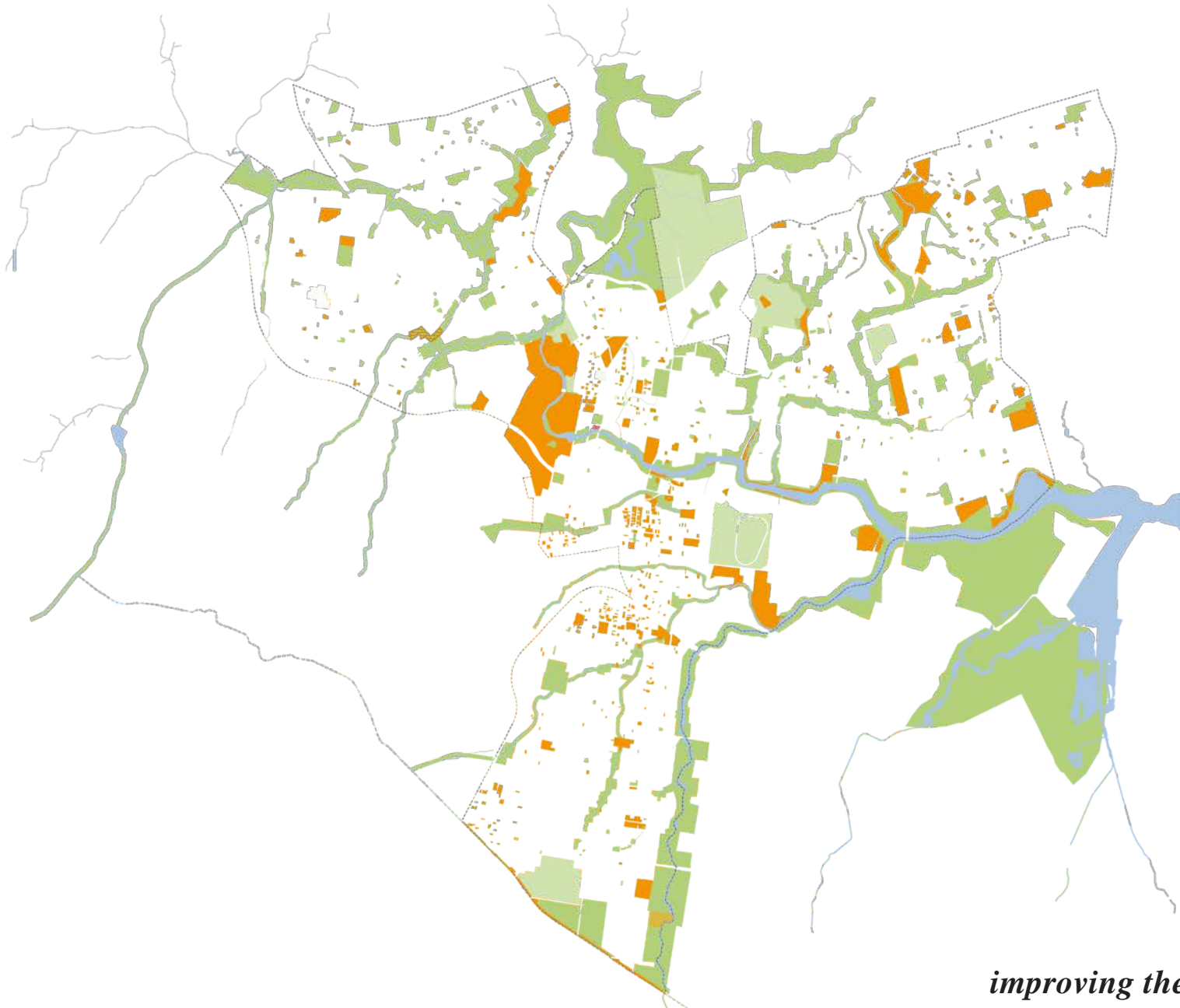






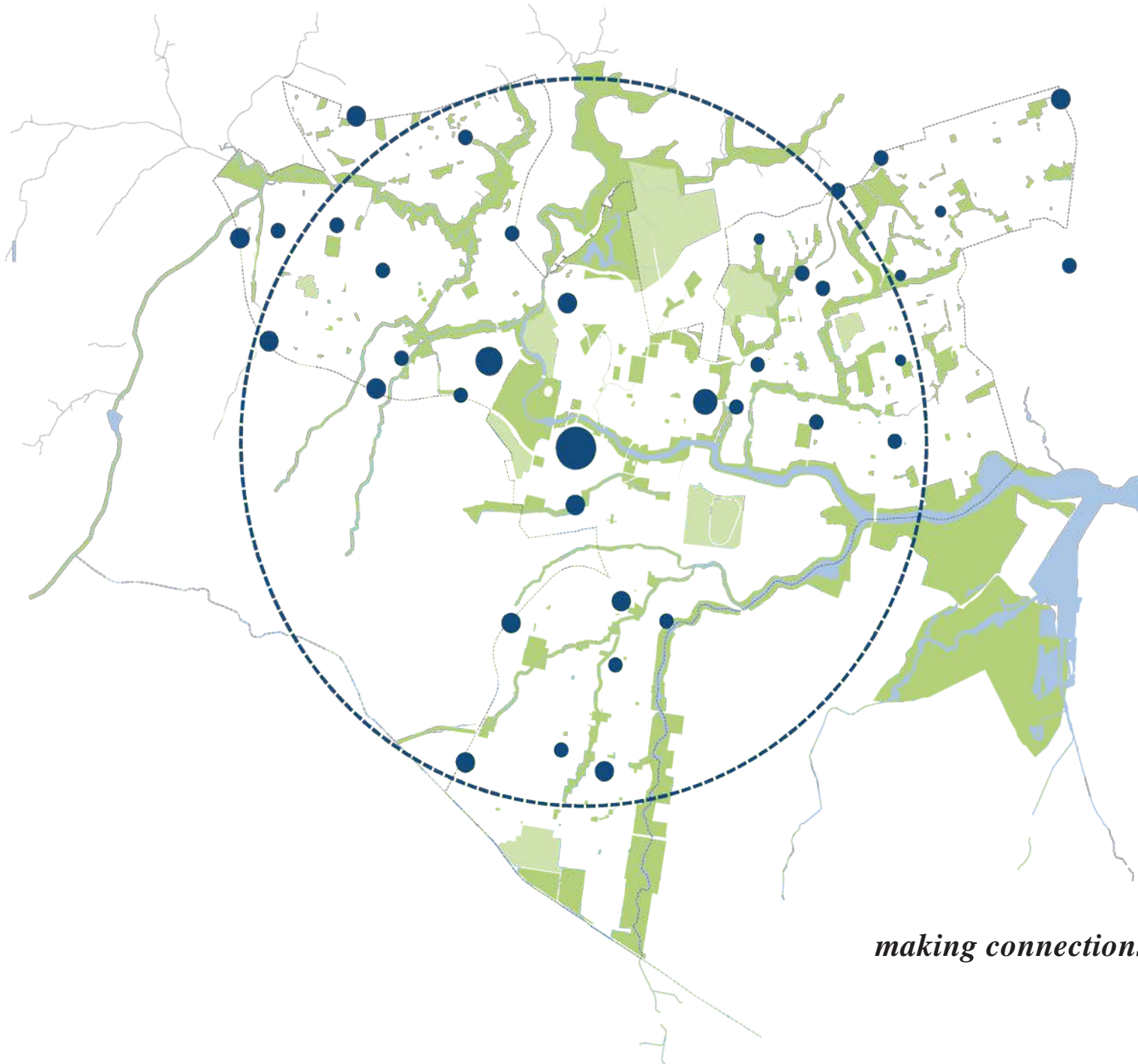


managing flood risk

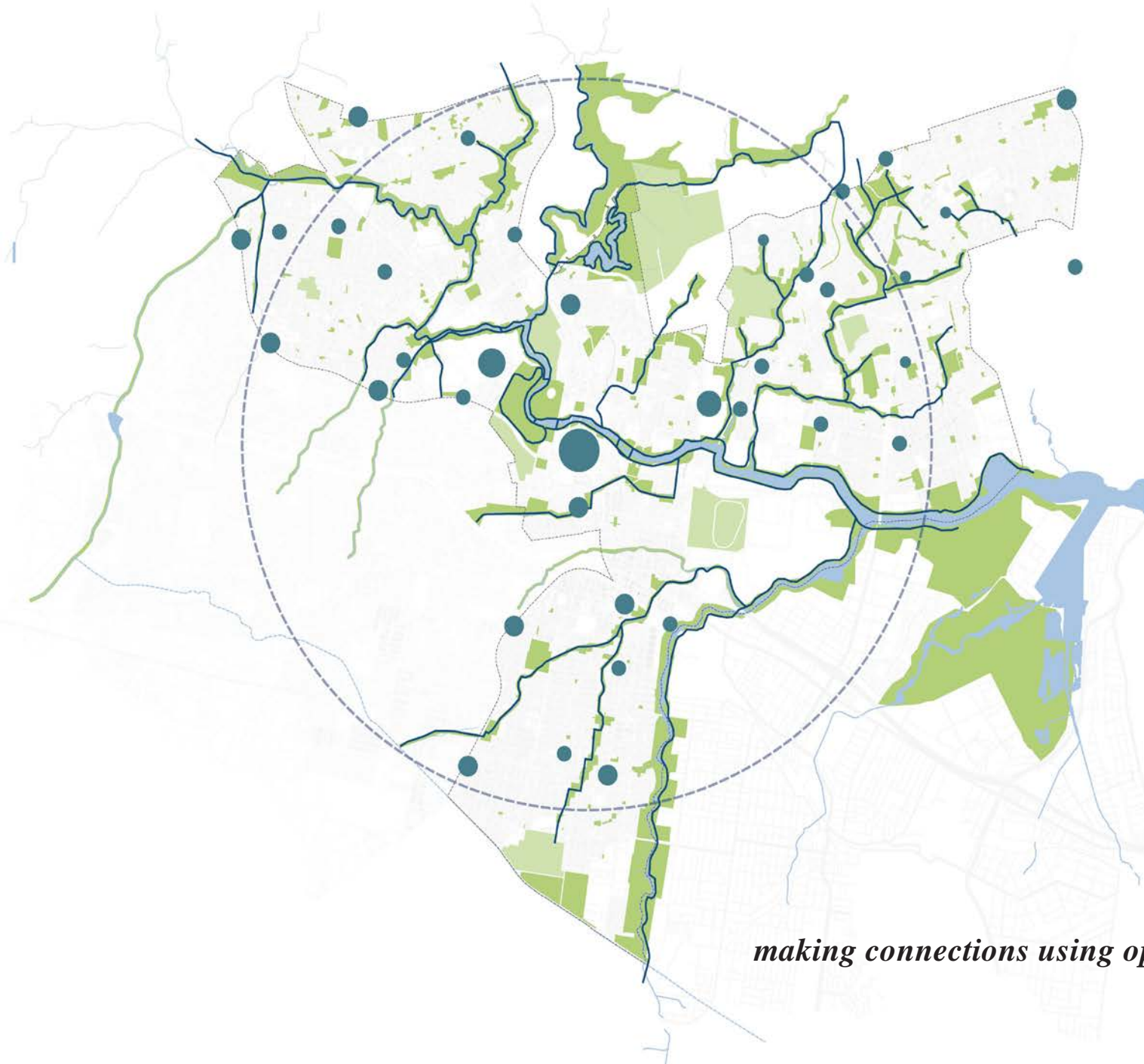


improving the visitor experience

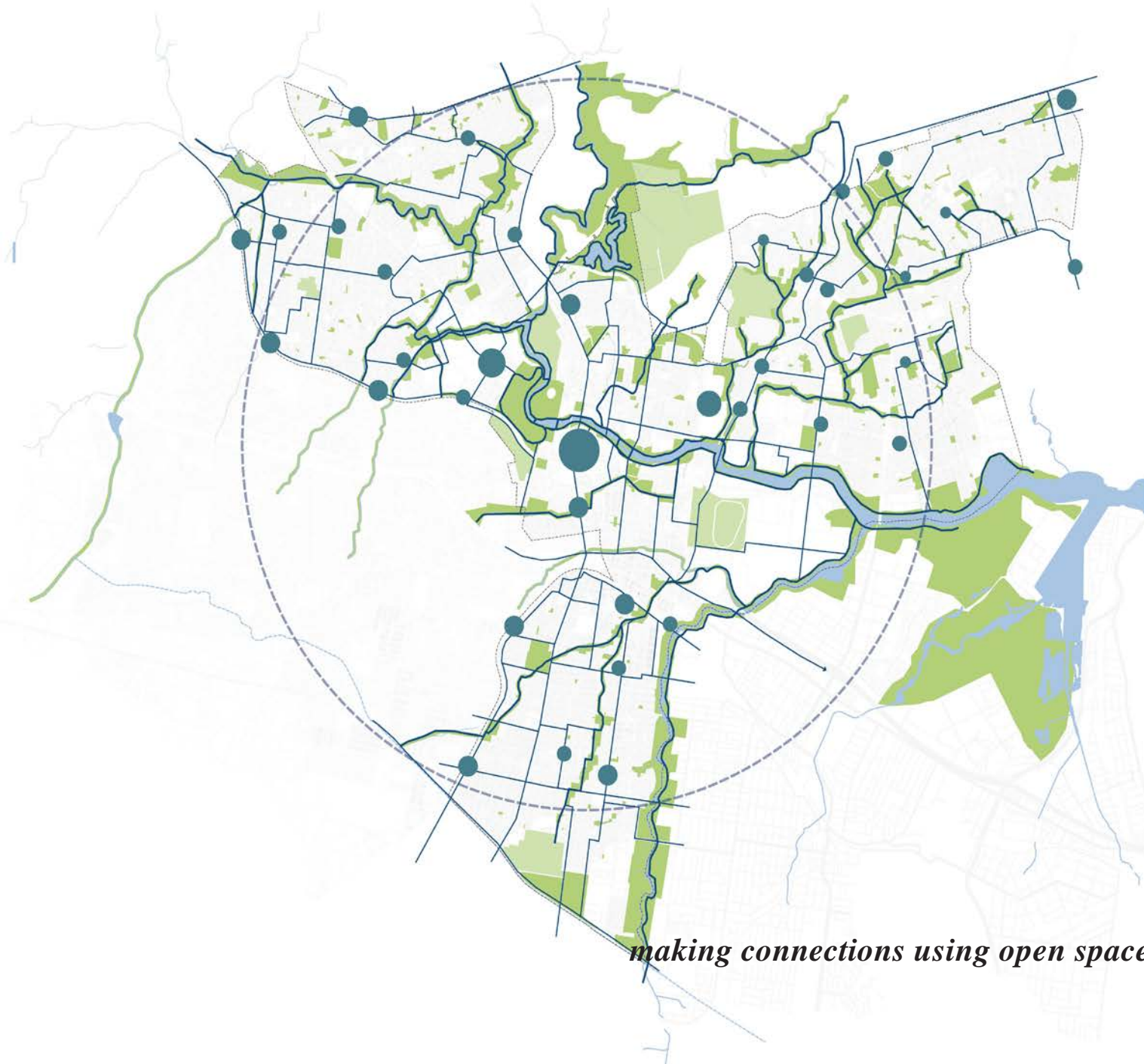




making connections 5 km cycle radius



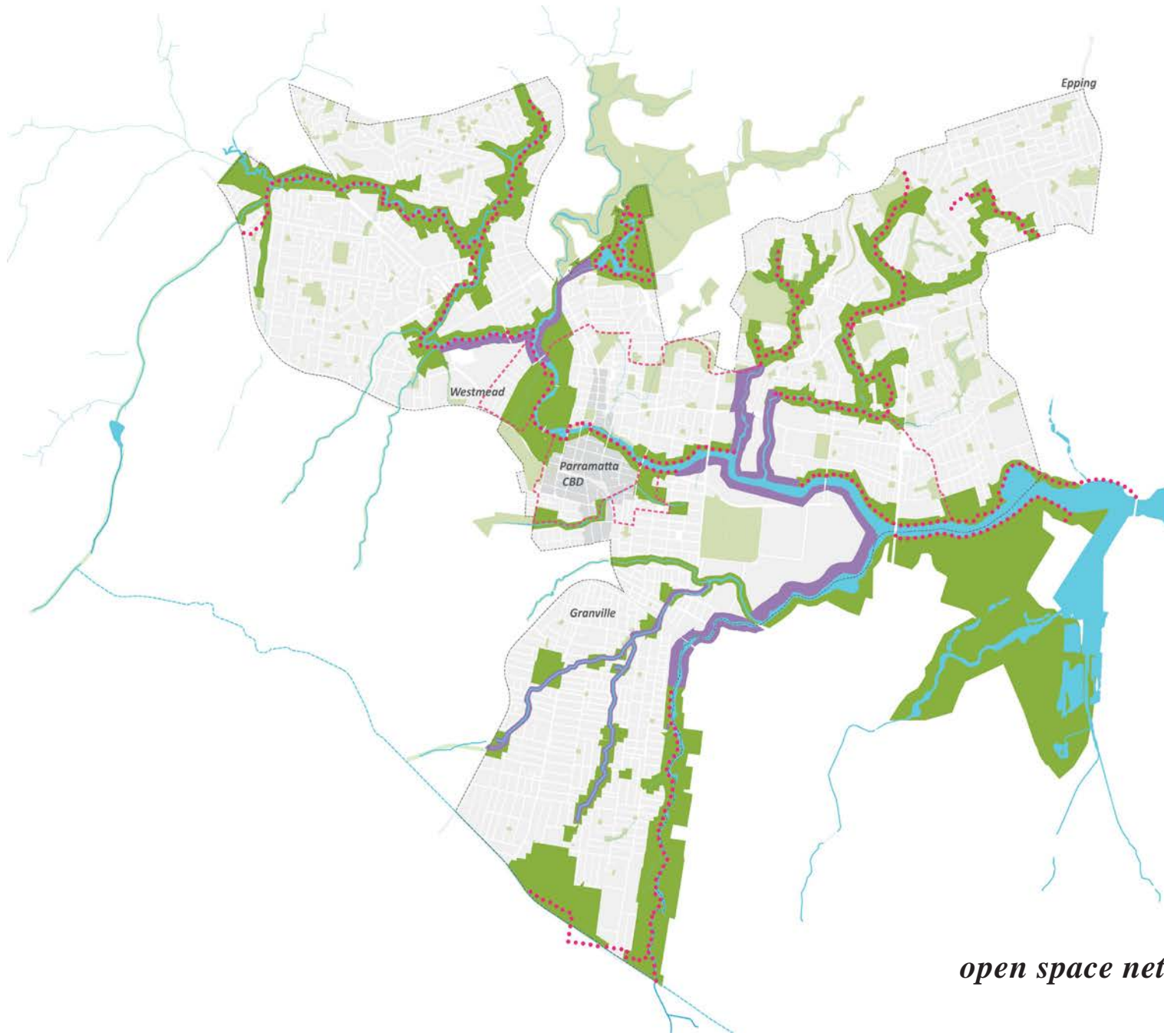
making connections using open space corridors



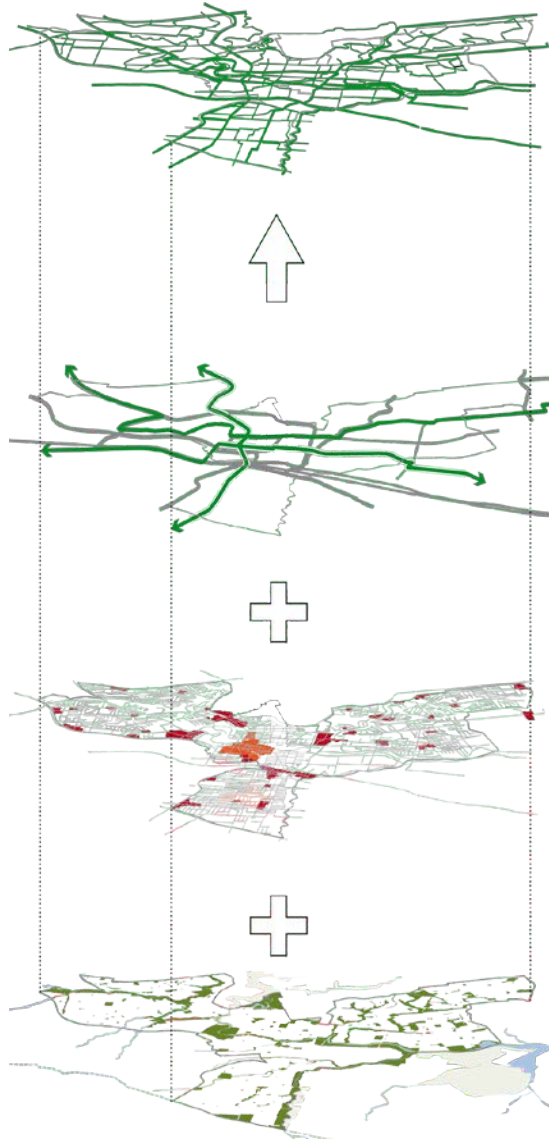
making connections using open space and street network



making connections using transport infrastructure



open space network missing links



Interconnected network of shared pathways

Existing and future transport network

Neighbourhood centres and fine grain street network

Parramatta open space, and River and tributaries network

benefits of the green grid

provides a spatial framework to regional planning

provides opportunity to put policy into action adds value to urban development

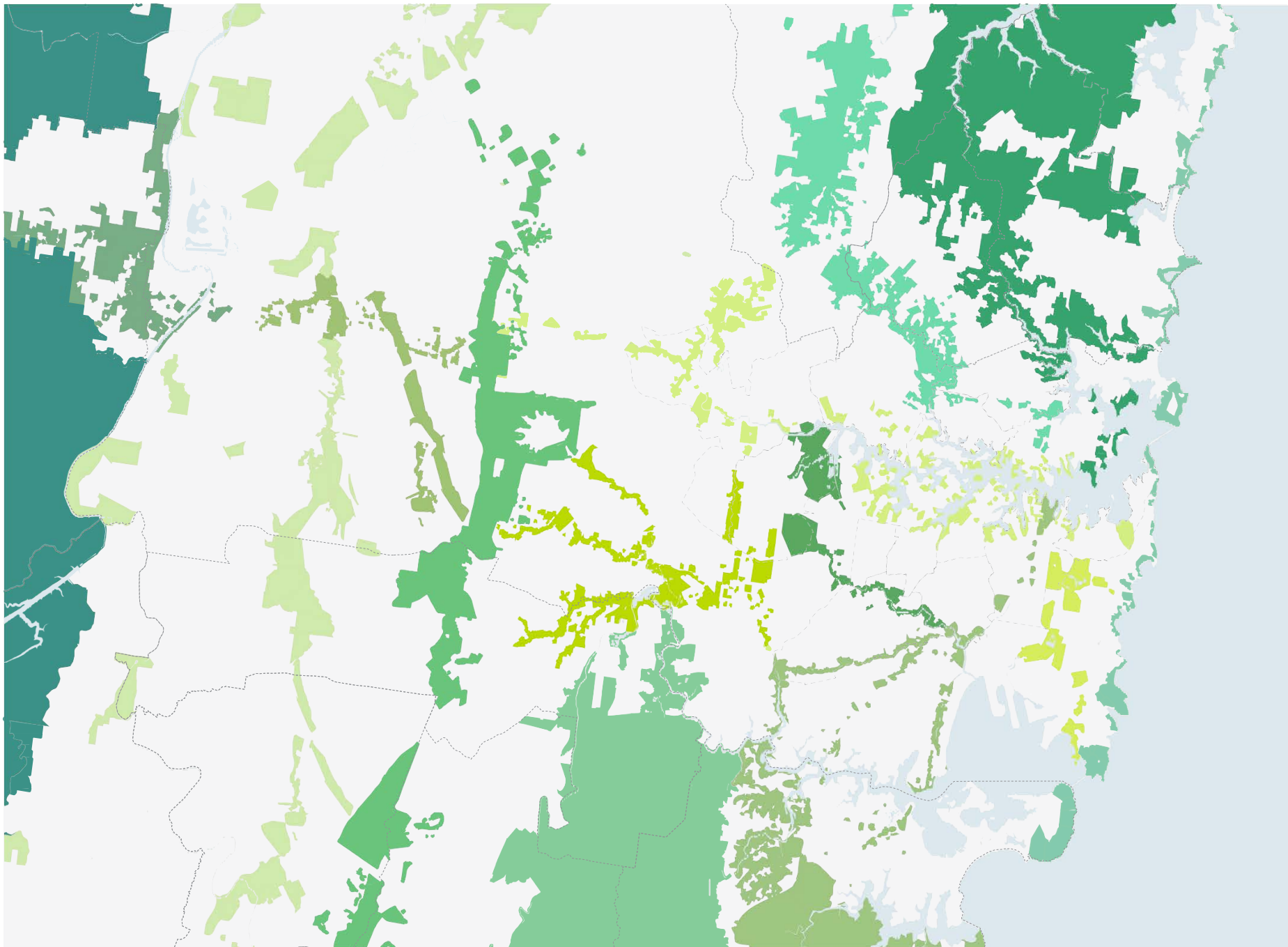
increases access to open space promotes healthy living

improves sustainable travel connections

conserves and enhances biodiversity and increase access to nature facilitates

adaptation to climate extremes and promotes urban greening enhances

distinctive destinations and boosts the visitor economy





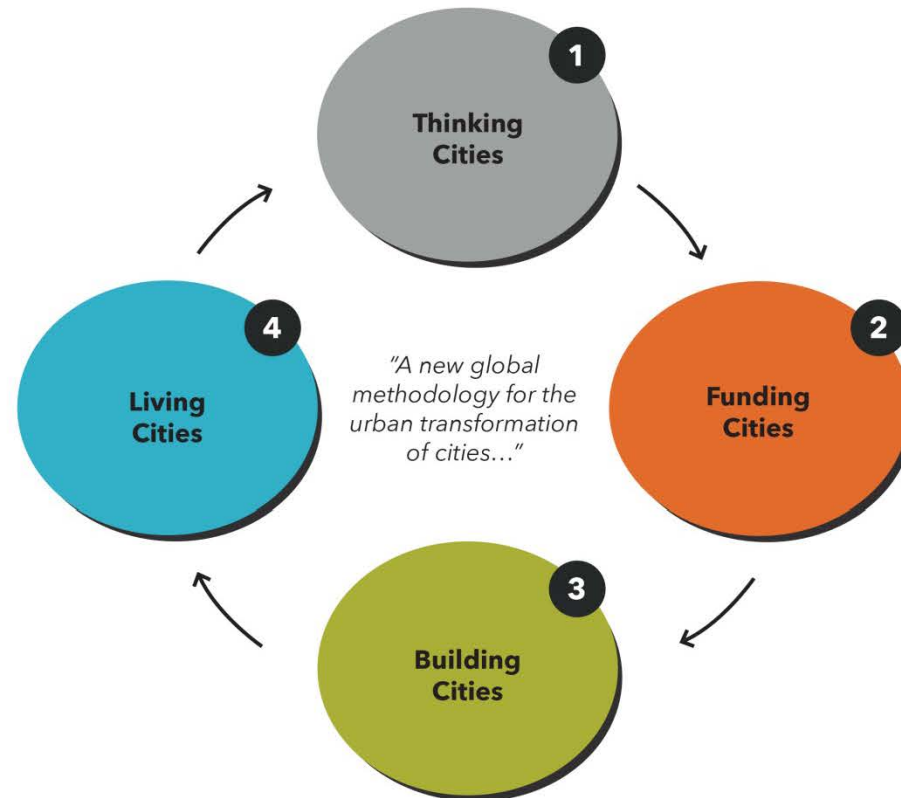


**Urban
Growth**
NSW

UrbanGrowth NSW: City Transformation Life Cycle™



UrbanGrowth NSW: City Transformation Life Cycle™



The Bays Precinct, Sydney Strategic Plan & Indicative Timeline

Oct 2014

Summit Sessional
Papers published

18 - 20 Nov 2014

The Bays Precinct,
Sydney International
Summit

Nov 2014

Communique

**Nov 2014 –
Mar 2015**

Development of
the Strategic
Plan

28 Mar 2015

NSW State
Election

Apr 2015

Present Draft
Strategic Plan
to Government

May 2015

Sydneysiders
Summit

June 2015

Stakeholder
Engagement

July 2015

Final Strategic
Plan

Aug 2015

Present Final
Strategic Plan
to Government

Sept 2015

Commence
Project
Planning

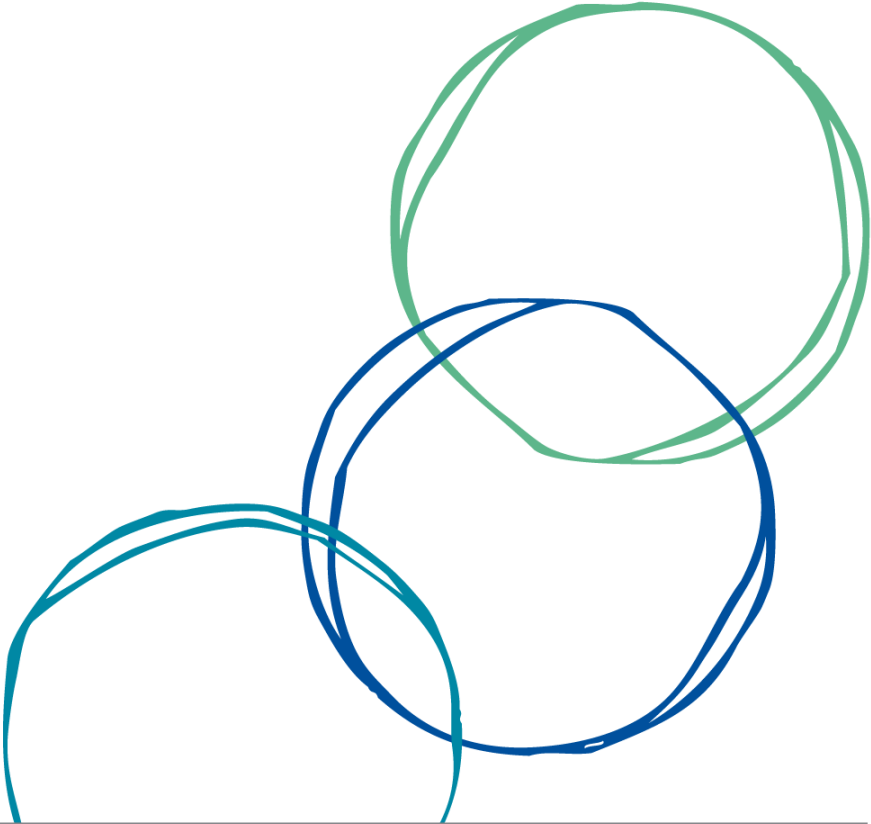


**Urban
Growth**
NSW

Showcase Sydney: Shaping a Low Carbon Future



Panel discussion



Thank you

To find out more, contact:

[CRC for Low Carbon Living Ltd](http://www.lowcarbonlivingcrc.com.au)
www.lowcarbonlivingcrc.com.au

Room 202-207, Level 2
Tyree Energy Technologies Building
UNSW Sydney NSW 2052 Australia

Twitter: @CRC_LCL
info@lowcarbonlivingcrc.com.au
P: +61 2 9385 5402
F: +61 2 9385 5530

Extra contact details if required:

Ken Maher
Leader, SME & Peak Body Network, CRC for Low
Carbon Living
HASSELL Fellow

kmaher@hassellstudio.com