

# CRC LCL Broadway

Living Lab - Precinct retrofitting research

RP2018

Presenter: Roger Swinbourne

# Introduction

## Broadway - Retrofitting urban precincts

- Broadway research project overview
- Research partnership and role of the CRC LCL
- Broadway Living Laboratory - perceived benefits

# Introduction - Definition

## Broad definition

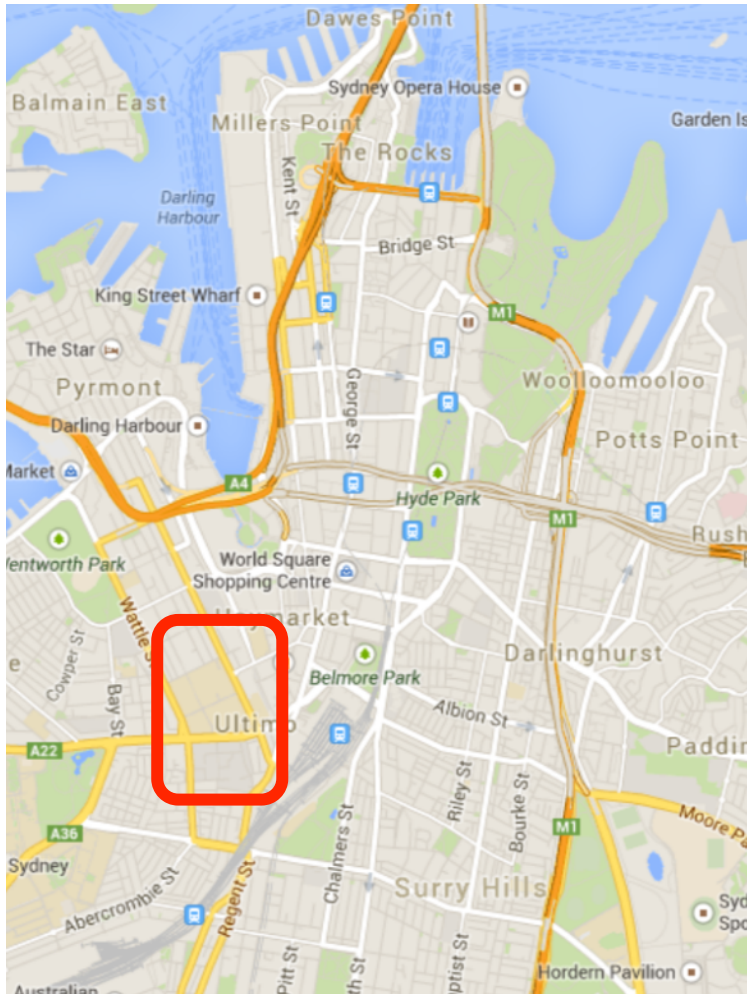
- Significant growth plans
- Impact on infrastructure and carbon
- Opportunity identified - Energy and Water
- Stakeholders identified
- Project identified and initiated

# Introduction - Definition

## Project definition

- Known challenges – lots of pre work
- Existing drivers – policy, economic, academic, intent and current projects
- Stakeholders defined
- Project identified and initiated

# Project – Overview



- 2 industry workshops held to define the challenge and research need
- Focus on governance & business cases, and transition
- Ensuring effective industry and research partnership through the CRC LCL

# Project – Overview



- 2 industry workshops held to define the challenge and research need
- Focus on governance & business cases and trading platforms
- Ensuring effective industry and research partnership through the CRC LCL

# Project – Overview



# Project – Method – Stage 1

## Context and baselines

- Governance and stakeholder value
- Economics and finance
- Global best practice
- Infrastructure and utility baseline



# Project – Method

## Context and baselines

- Governance and stakeholder value
- Economics and finance
- Global best practice
- Infrastructure and utility baseline

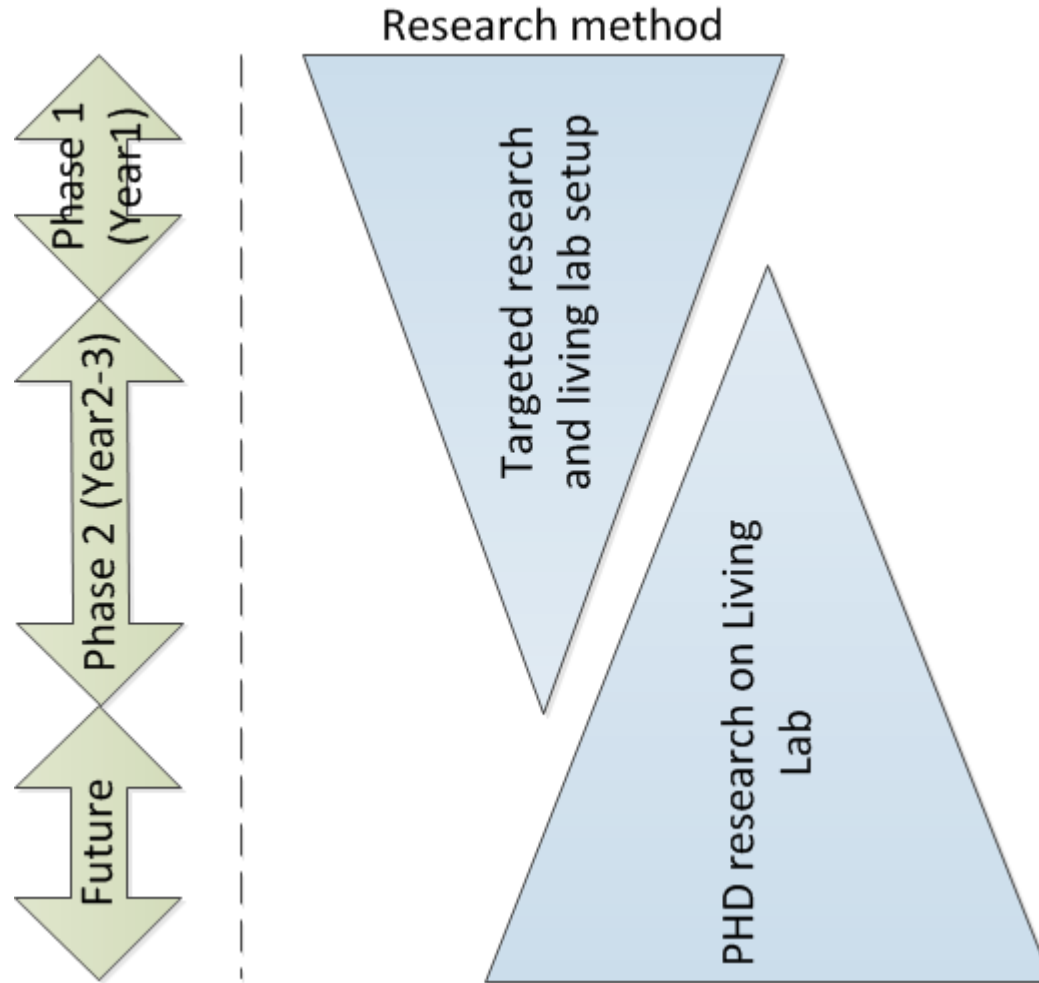
## Definitions and scenarios

- Scenario development and testing
- Governance scenarios, ownership, costing and management
- Precinct integration strategies

## Implementation actions

- Broadway transition plan
- Industry guidance materials
- Carbon benchmarking
- Demonstration of niche experiments

# Project – Method



# Project – Method

## Research team (CRC)

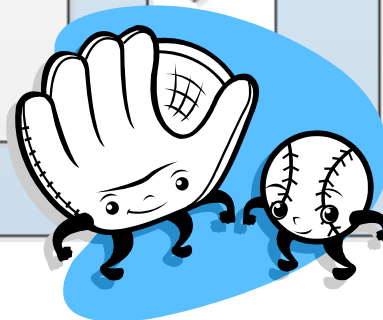
### Research team

- AECOM - Roger Swinbourne
- Brookfield FlowSystems - Dan Hilson, Lisa McLean, Lauren Hass
- UTS - Ed Langam, Stuart White, Wendy Yeomans
- UG - Toby Adams
- UNSW - Alastair Sproul
- Swin - Peter Newton

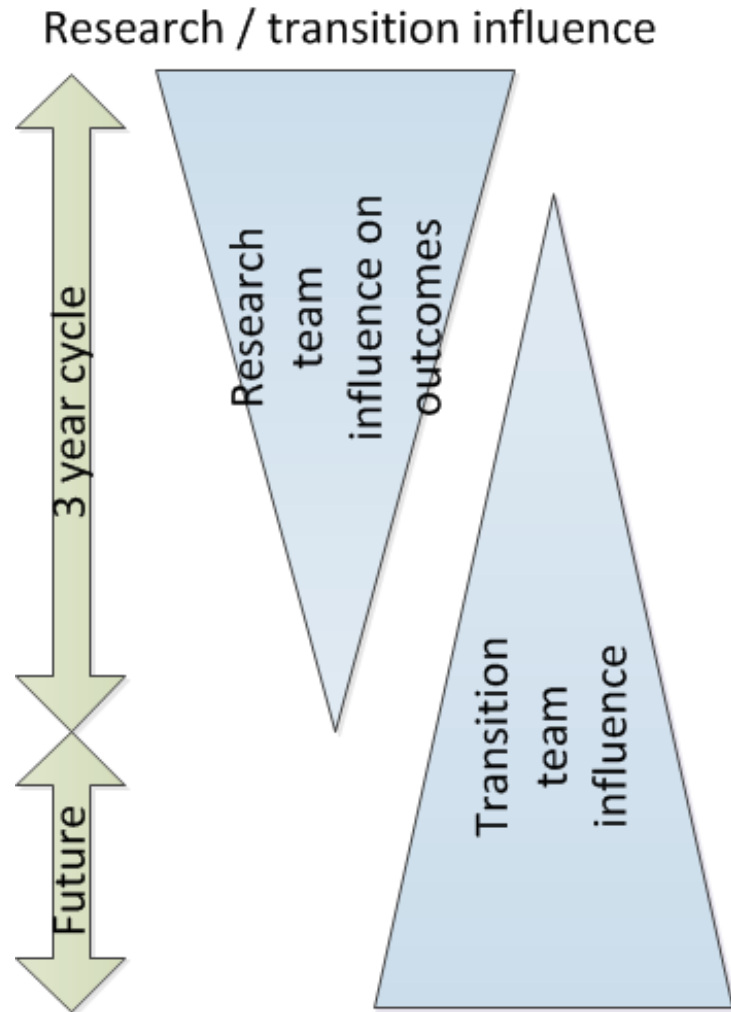
## Transition team (Stakeholders)

### Transition team

- UTS Facilities
- TAFE Facilities
- Central Park - FRAZERS / Sekisui / Brookfield
- City of Sydney
- Better Building Partnership
- ABC / Mirvac / UG?
- TEC Green Capital Project



# Project – Method



# Living Laboratories – Benefits

## Perceived benefits of Living Labs

- Enabling forum for achieving effective academic and industry partnerships
- Enables researchers to focus on the gaps in the interactions between policy, technology, stakeholders, delivery mechanisms and economics
- Researchers can engage with complexity of project challenges and data while in progress