

RP2010

UNDERSTANDING THE ROLE OF PUBLIC SECTOR CLIENT'S AGENCY IN INFLUENCING LOW CARBON BEHAVIOURS IN AUSTRALIAN PRECINCT DEVELOPMENT.

Research Question

The over-arching research question is:

What is the role of public sector client's agency in influencing low carbon behaviours of supply chains involved in Australian precinct developments?

The joint CRC LCL project, RP2010 'Informing and Trialling the inclusion of Low Carbon requirements in State Government Built Environment Sector Tenders', between Swinburne and Curtin Universities is seeking to improve the low carbon performance of construction supply chains. Sitting within this project, the student research will narrow the focus to understanding the role of public sector clients' agency in influencing low carbon behaviours in construction supply chains involved in Australian precinct development.



Figure 1: Land development "Renwick" Bong Bong Road, Mittagong, UrbanGrowth NSW

Methodology

The research adopts an interpretivist research paradigm using soft systems methodology.

The underlying philosophy of this approach is that the social environment in which the procurement of precinct development takes place is complex and each situation is unique.

SSM will help to capture the unique contexts of the engagement of public entities with precinct development and their ability to influence low carbon outcomes of the project.

Rich pictures will be developed from semi-structured in-depth interviews, of which the results will then be triangulated with secondary document data including organisation documents including tenders.

Progress to-date

The broader CRC LCL project, in which this research sits within, has completed an initial scoping interview as well as a 'low carbon readiness survey' with industry partner, UrbanGrowth, and their panel of providers.

The current research informed the low carbon readiness survey on questions on influence ability.

An application for ethics approval for the student research is underway.

Anticipated impacts

In order to achieve a reduction in the carbon footprint of precinct development, clients must be able to reach deeply into the supply chain to influence change. Client agency for improved supply chain performance have been analysed in a limited capacity.

The student research will determine the power that different public entities have and how they can exercise their power to influence low carbon behaviours in construction supply chains.

One component of this is to adapt the knowledge on the concept of the construction "client" by defining them in the context of public sector engagement with precinct developments. This will allow a better understanding of how different public entities can enhance their ability to influence low carbon performance improvement.

Another component of the study will be to classify the level of control of different clients. From this, a new public procurement model can be developed that informs clients on interventions that overcome barriers to influencing the construction supply chain (Figure 2). Ultimately, the model will be suitable for public entities with varying engagement with precinct development. With the inclusion of "control", clients will be better informed about how to bring about change.

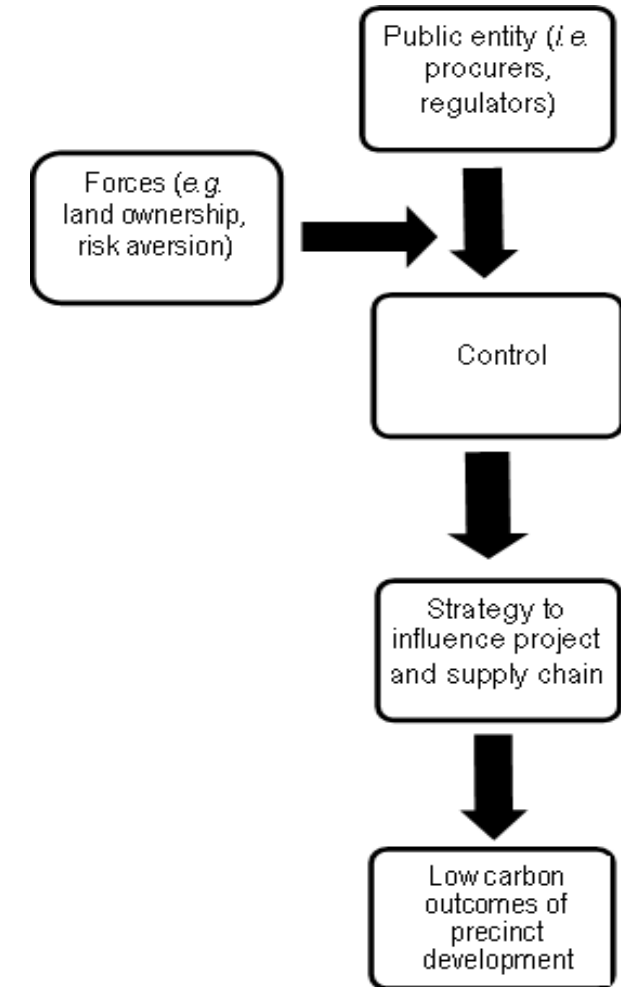


Figure 2: Public procurement model.

Further information

For information regarding CRC LCL Project RP2010, visit:

<http://www.lowcarbonlivingcrc.com.au/research/program-2-low-carbon-precincts/rp2010-informing-and-trialling-low-carbon-inclusions-state>.

Contact

Juliana Bedggood (HDR Candidate)
Swinburne University of Technology
jbedggood@swin.edu.au