

# HIGH PERFORMANCE HOUSING

## Monitoring, Evaluating & Communicating the Journey

Josh Byrne & Peter Newman





# JOSH'S HOUSE – HILTON, WA



19/11/2014

# Solar Passive Design



19/11/2014



# Solar Technologies



19/11/2014



# Rainwater Harvesting



19/11/2014



# Greywater Reuse



19/11/2014



# Low Water Use Landscaping



19/11/2014



# Play Spaces



19/11/2014

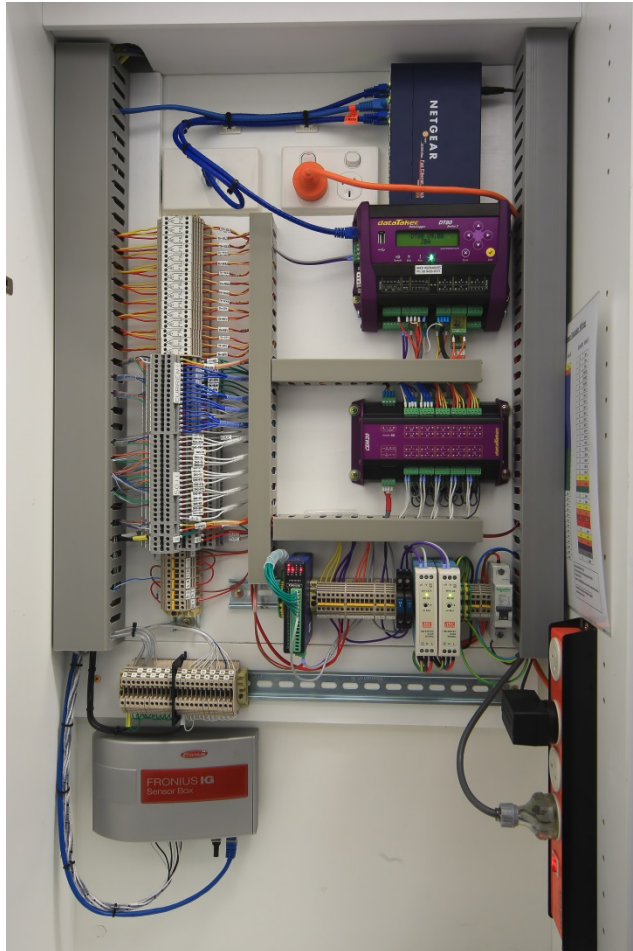


# Food Production



19/11/2014

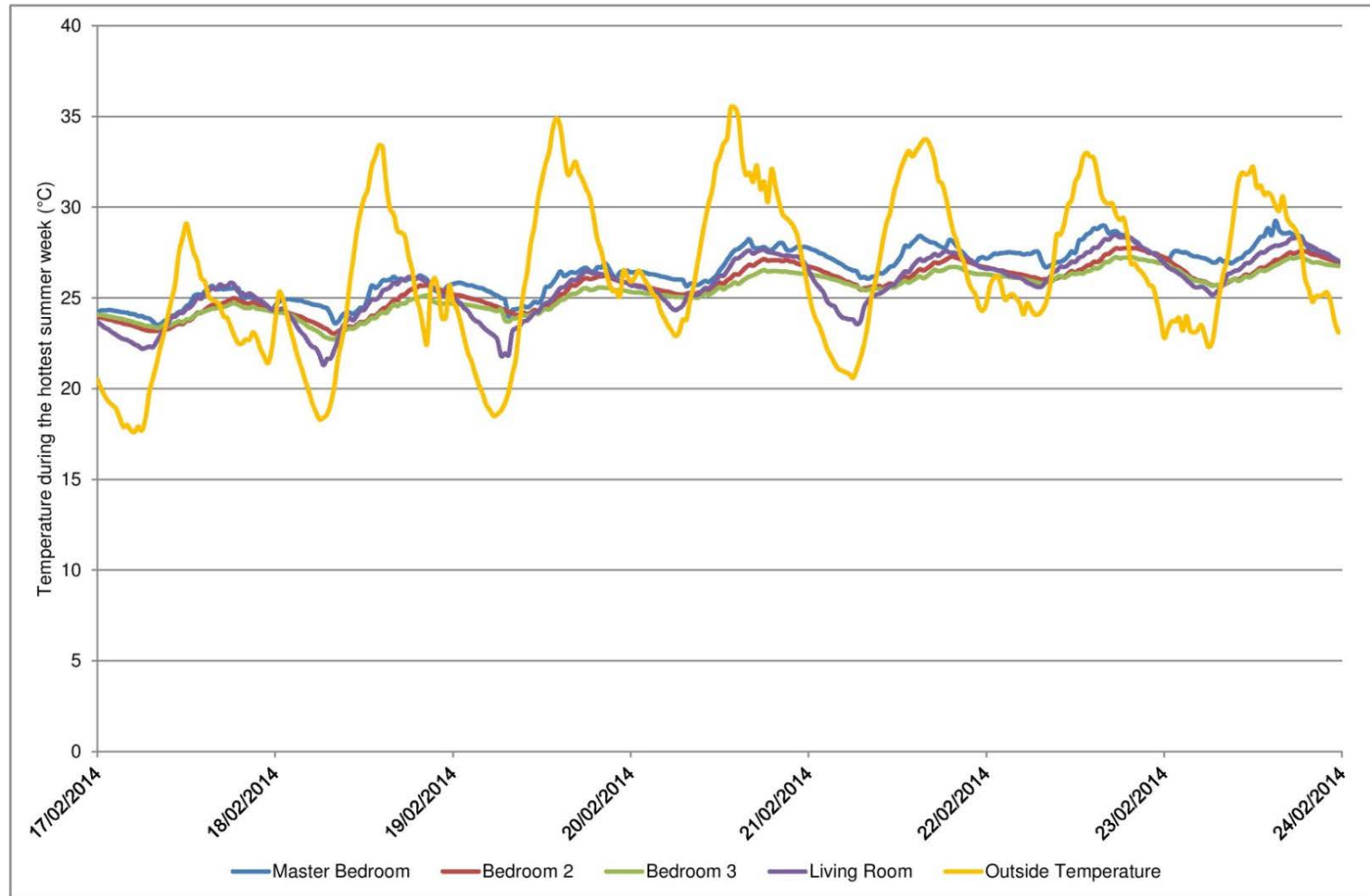
# PERFORMANCE MONITORING



19/11/2014

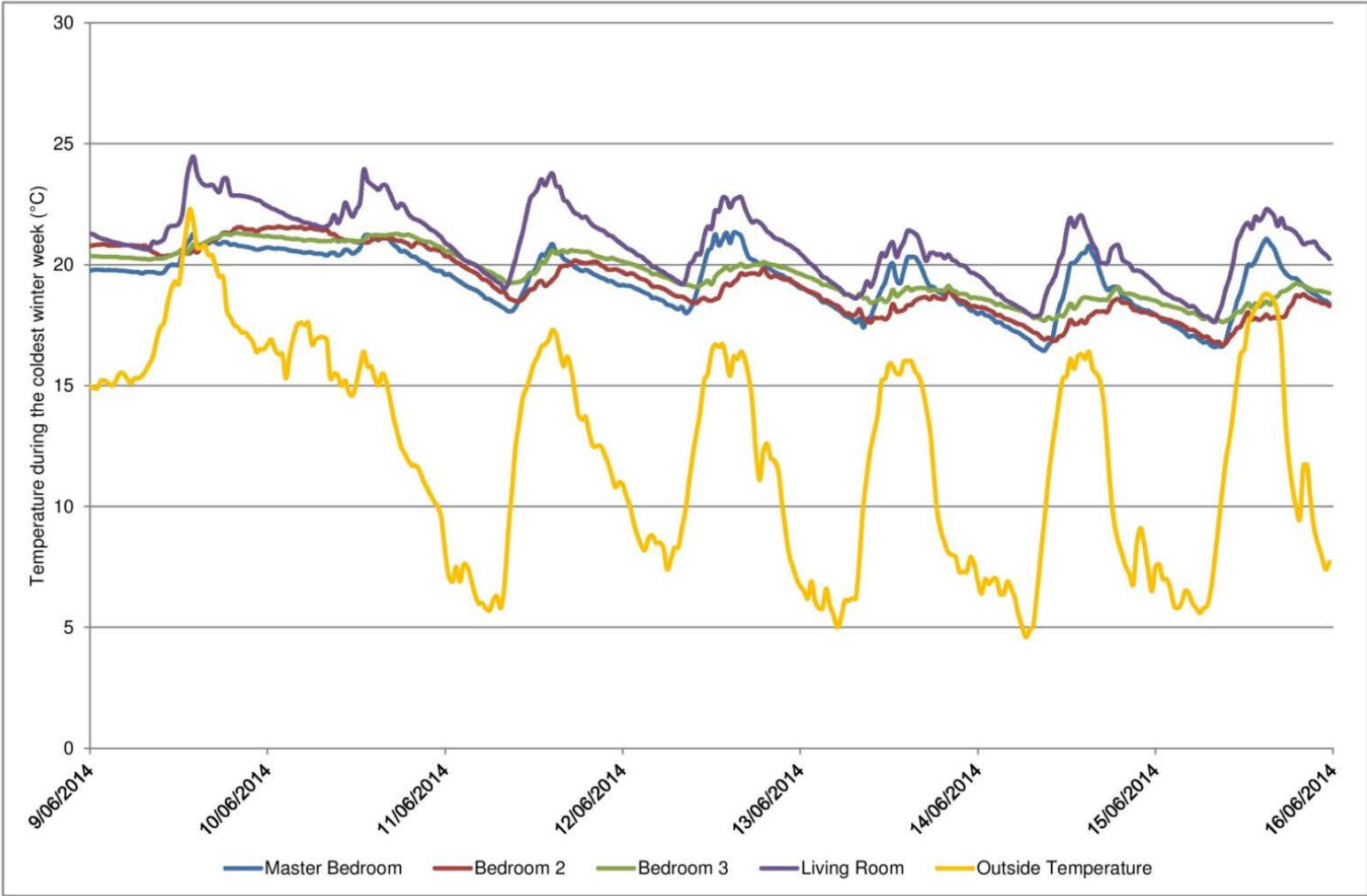


# Temperature (Hot Summer Week)



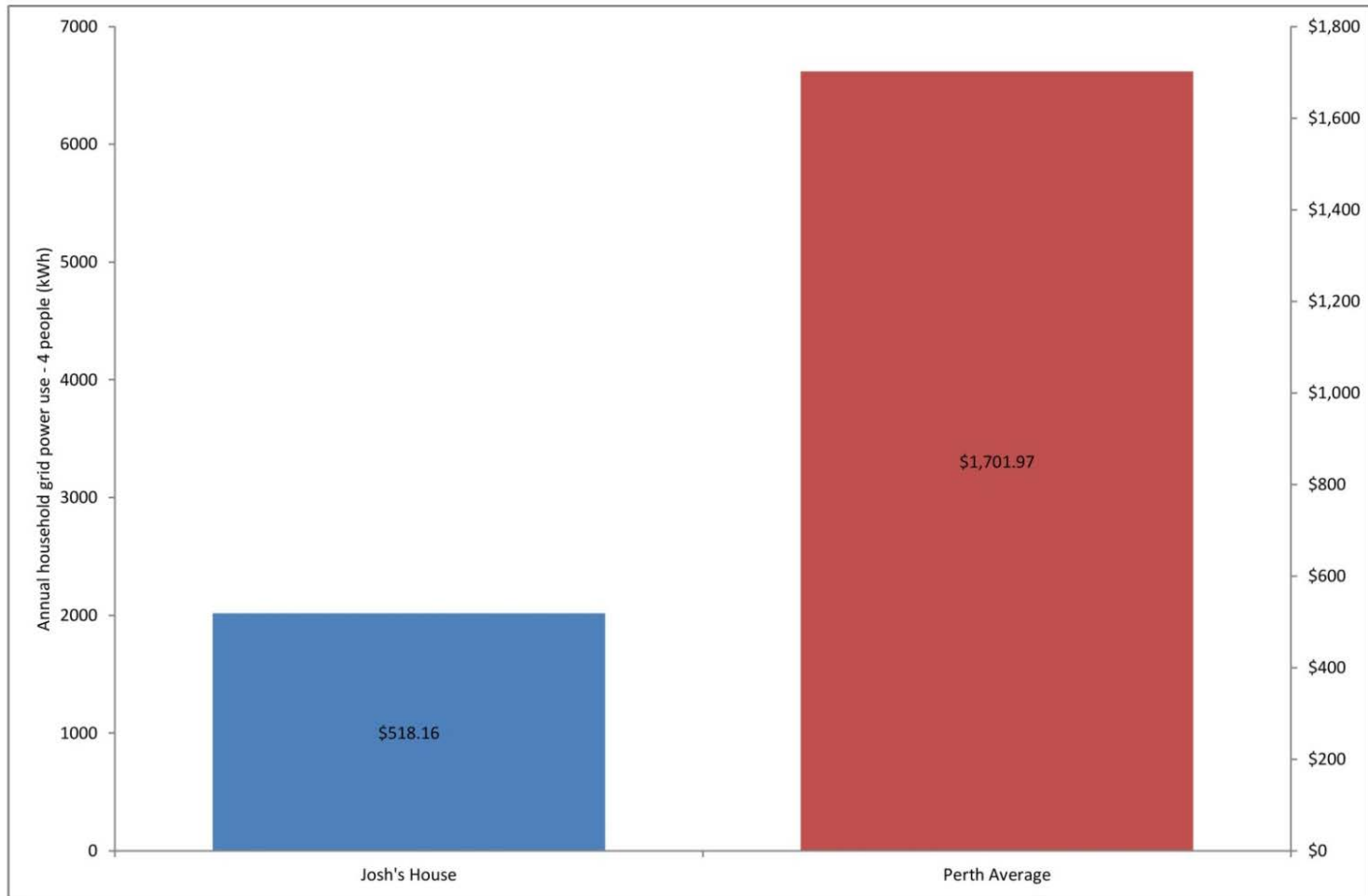
19/11/2014

# Temperature (Cold Winter Week)



19/11/2014

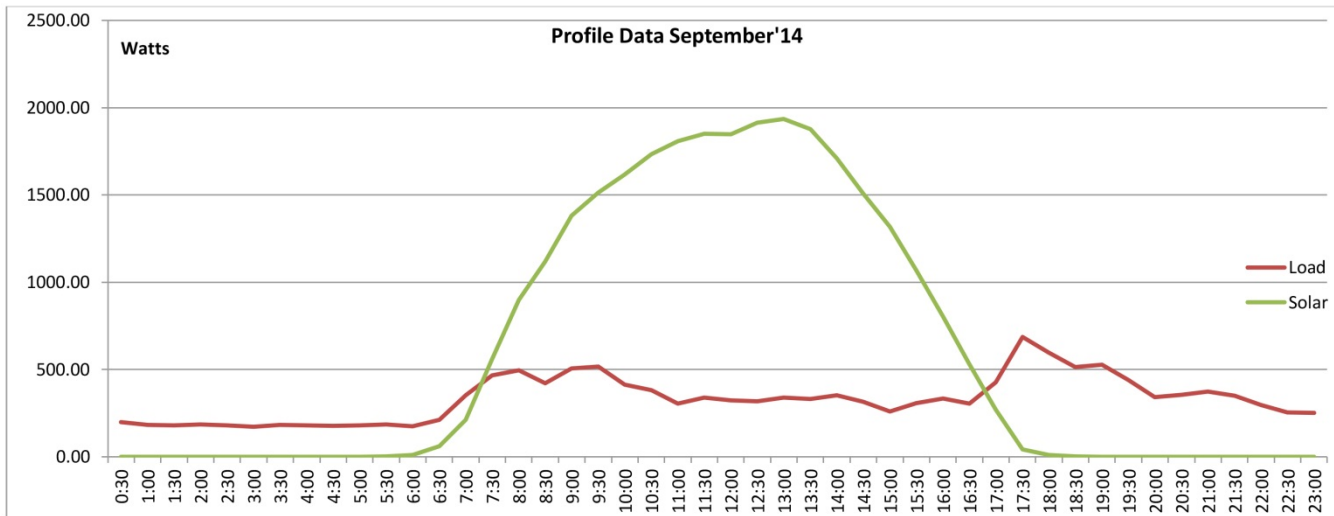
# Electricity Use (with PV)



19/11/2014

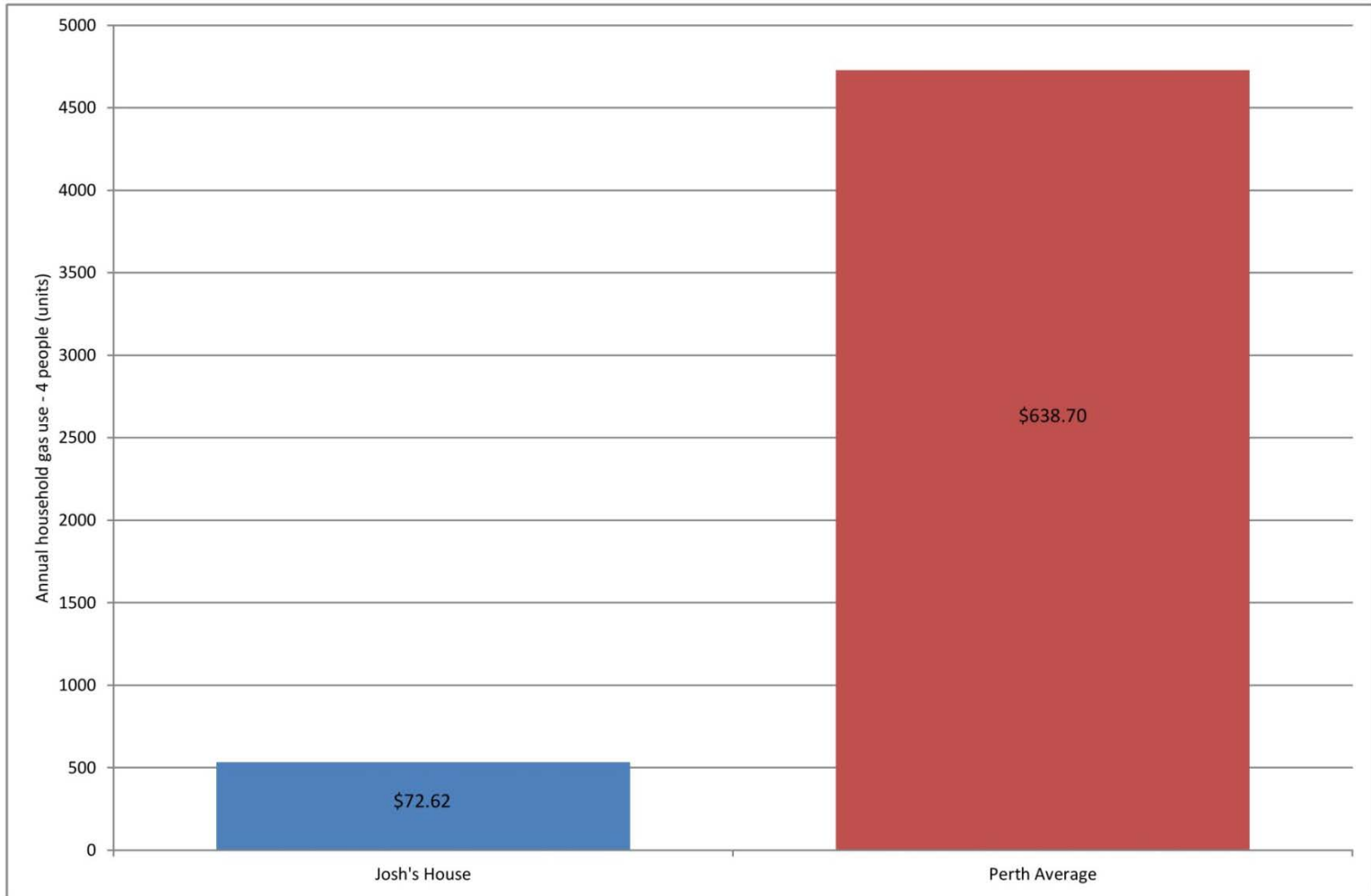


# PV Generation & Load Profile



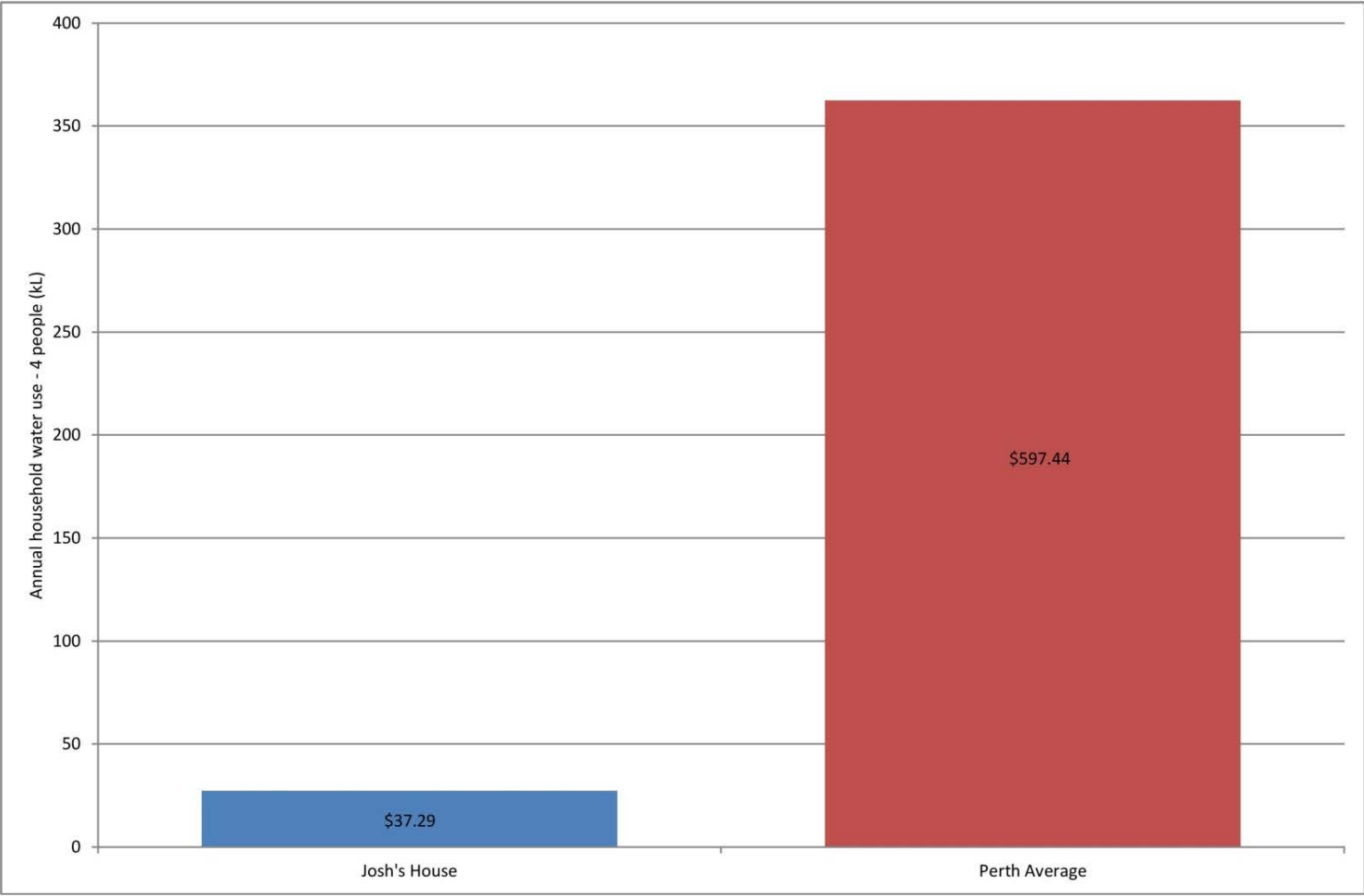
19/11/2014

# Gas Use



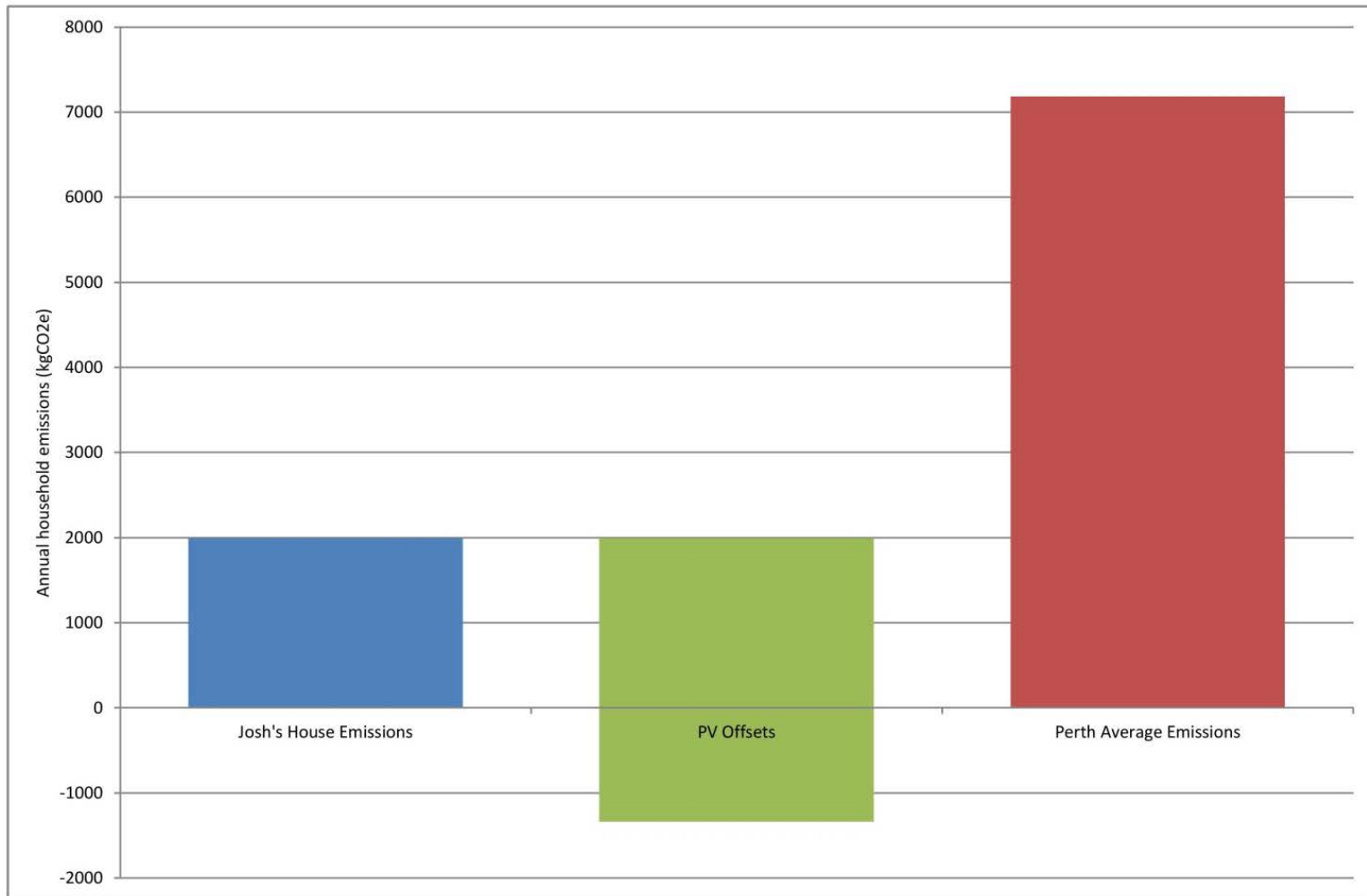
19/11/2014

# Mains Water Use



19/11/2014

# GHG Emissions



19/11/2014



# Communications & Community Engagement Program (CCEP)

- [www.joshshouse.com.au](http://www.joshshouse.com.au)
  - Plans & design reports
  - Factsheets
  - **Real time data display**
- On-line videos
- Enews
- Social media
- Awards
- Events

The screenshot displays the website for 'Josh's House'. At the top, there is a navigation bar with links for 'HOME', 'ABOUT THE PROJECT', 'PARTNERSHIPS', 'NEWS', 'RESOURCES', 'MEDIA', 'PHOTO ALBUM', and 'CONTACT'. A search bar is also present. Below the navigation is a large video player for 'JOSH'S HOUSE EPISODE 7' with a play button and a progress bar showing 08:33. A green banner below the video reads 'SHOWCASING THE BENEFITS OF SUSTAINABLE HOUSING TO THE COMMUNITY THROUGH DEMONSTRATION AND INSPIRATION'. Below this are two news snippets: one about a partnership with Josh Byrne & Associates for greywater diversion systems, and another about a feature in the Sunday Times. At the bottom, there are four circular buttons: 'THE PROJECT', 'OUR PARTNERS', 'RECENT NEWS', and 'SUBSCRIBE'. A 'QUICK FIND' section at the very bottom lists categories like 'PLANS', 'SUSTAINABILITY ASSESSMENTS', 'VIDEO ARCHIVE', and 'JOIN IN' with sub-links for each.

19/11/2014

# Open Days



19/11/2014



# Public Events



19/11/2014

# Workshops



19/11/2014



# Special Events



19/11/2014

# CCEP Metrics

<b>COMMUNICATION ACTIVITIES</b>	<b>Metrics</b>
<b>Josh's House Website Page Visits</b>	<b>291,473</b>
<b>Josh's House Video Views</b>	<b>53,337</b>
<b>eNews Campaigns – Total Issued</b>	<b>57,617</b>
<b>Social Media Activity – Total Reach</b>	<b>62,854</b>
<b>Site Tours, VIP Visits and Events at Josh's House – Total Visits</b>	<b>5,115</b>
<b>Presentations – Total Audience</b>	<b>4,784</b>
<b>Broadcast Media – Estimated Audience</b>	<b>14,785,000</b>
<b>Print Media Publications – Estimated Readership</b>	<b>10,981,954</b>
<b>Digital Media By Others</b>	<b>243,812</b>
<b>Total</b>	<b>26,531,241</b>

19/11/2014



19/11/2014



# Zero Emission House, Melbourne



19/11/2014

# CSR House, Sydney



19/11/2014



# Innovation House, Townsville



19/11/2014



# Pilbara Vernacular House, Karratha



19/11/2014

# Lochiel Park, Adelaide



19/11/2014

w: [joshshouse.com.au](http://joshshouse.com.au)

fb: [joshshouse10star](#)

tw: [joshsshouse10](#)

ig: [joshshouse10](#)

